

ISO 20022

Modification Advice and Verification Identification - Maintenance 2012

Approved by the Payments SEG on 03 April 2012

Message Definition Report

Edition June 2012

Table Of Contents

Overview	1
Scope	1
List of change requests	1
Message Flow	2
Modification Advice and Verification Identification Information scenarios	2
acmt.022.001.02 IdentificationModificationAdviceV02	5
Message Functionality	5
Structure	5
Rules and Guidelines	7
Message Items Description	7
Business Example	15
acmt.023.001.02 IdentificationVerificationRequestV02	19
Message Functionality	19
Structure	19
Rules and Guidelines	20
Message Items Description	21
Business Example 1	27
Business Example 2	29
acmt.024.001.02 IdentificationVerificationReportV02	31
Message Functionality	31
Structure	31
Rules and Guidelines	33
Message Items Description	34
Business Example 1	43
Business Example 2	44
Message Item Types	47
Data Types	47
End Points	60
Indexes	96
Index of Message Items	96
Index of XML tags	101
Index of Message Item Types	107
Revision Record	115

Overview

Scope

This document describes a set of Account Management message definitions, developed by the French SWIFT User Group so called 'Groupement des Utilisateurs de SWIFT en France' and approved by the ISO 20022 Payments Standards Evaluation Group as ISO 20022 messages on 03 April 2012, as a result of the Maintenance 2011/2012. The messages were originally developed and approved in December 2009.

The set of **Modification Advice and Verification Identification Information** message definitions described are exchanged between financial institutions and between financial institutions and non-financial institutions.

This set includes the following message definitions:

- **IdentificationModificationAdvice message:**
This message is sent from a financial institution to a financial institution after the receipt of one or several transaction messages that include no longer valid party and/or account identification information, to advice on the correct party and/or account identification information.
- **IdentificationVerificationRequest message:**
This message is sent from a financial institution to a financial institution or from a non financial institution to a financial institution. The message is sent before sending a transaction message to verify party and/or account identification information.
- **IdentificationVerificationReport message:**
This message is sent from a financial institution to a financial institution or from a financial institution to a non financial institution in response to a received IdentificationVerificationRequest message. The message confirms whether or not the presented party and/or account identification information is correct.

List of change requests

A complete list of change requests with their approved implementation can be found in the Maintenance Change Request document, to be downloaded from the ISO 20022 website (www.iso20022.org) as follows:

- On the ISO 20022 website, go to Development and Maintenance > Status of Submissions;
- Download the History Log document on line 63 MCR Payments Maintenance 2011/2012;
- Open the document and follow the link to download the Maintenance Change Request.

Message Flow

Modification Advice and Verification Identification Information scenarios

Identification Modification Advice

Introduction

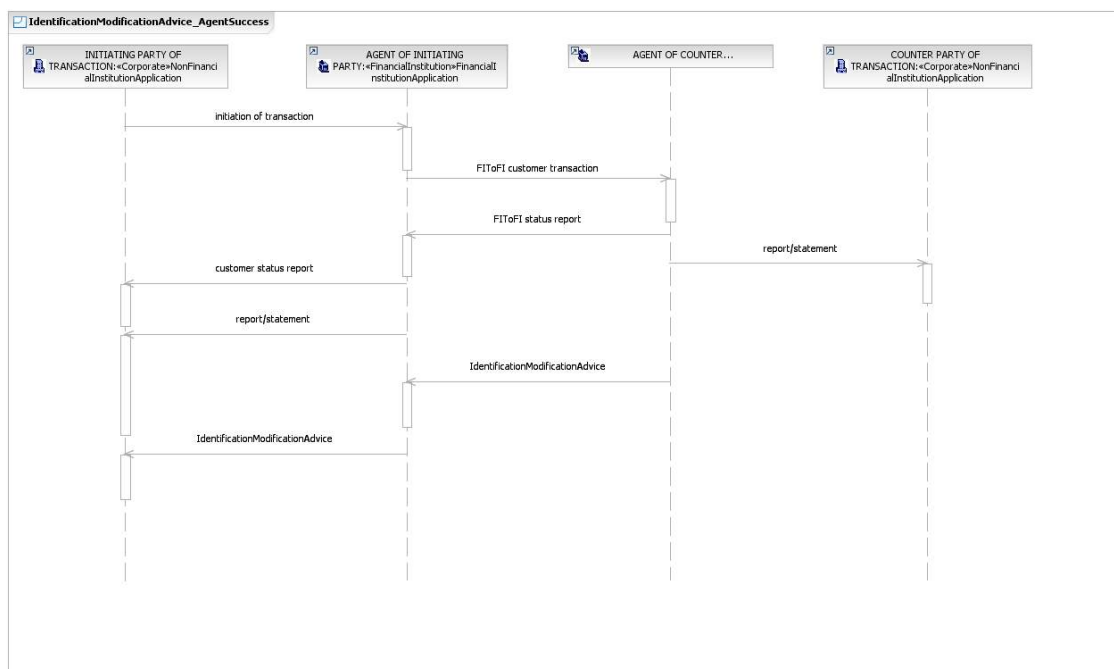
The IdentificationModificationAdvice message is used to advice on correct party and/or account identification information. The IdentificationModificationAdvice message is sent from an financial institution to another financial institution after the receipt of one or several transactions that include no longer valid party and/or account identification information.

There is no time limit on the time between the sending of an IdentificationModificationAdvice message and the receipt of the transaction(s) the IdentificationModificationAdvice message refers to.

The message includes the correct party and/or account identification information and may be forwarded to the initiating party of the transaction.

Scenario:

The assigner (in this case the agent of the counterparty in a transaction), received a FIToFI customer transaction message which included no longer valid identification information. Where necessary the assigner has updated the information and has settled the transaction. The assigner sends an IdentificationModificationAdvice message to advice the assignee (in this case the sender of the transaction message) of the correct identification information.



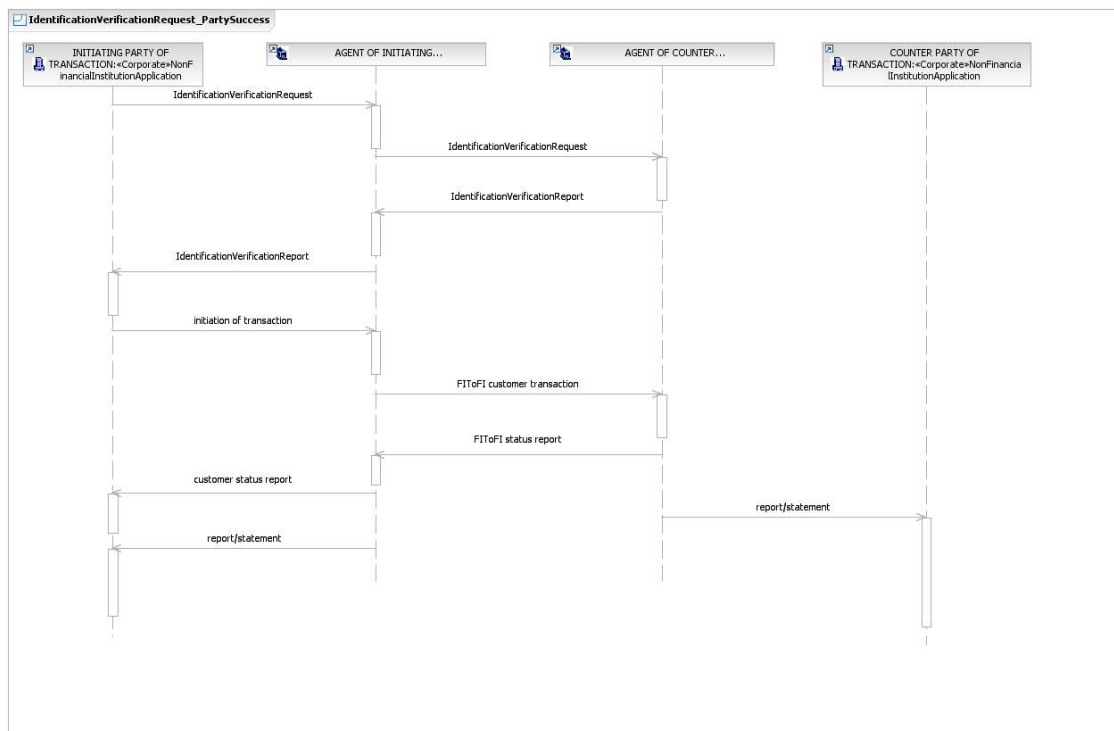
Identification Verification Request

Introduction

The IdentificationVerificationRequest message is used to request the verification of party and/or account identification information before sending a transaction message. The IdentificationVerificationRequest message is sent either from a financial institution to another financial institution or from a non financial institution to its financial institution. The message flow of the IdentificationVerificationReport message has been included to illustrate the complete flow of the IdentificationVerificationRequest message.

Scenario A:

Before initiating a transaction message the assigner (in this case the assigner is also the creator and the initiating party of a transaction) sends an IdentificationVerificationRequest message to the assignee (in this case the agent of the initiating party) requesting for verification of party and/or account identification information. An IdentificationVerificationRequest message is then send from the agent of the initiating party, now assigner, to the assignee (in this case he agent of the counterparty). In response an IdentificationVerificationReport message is sent from the agent of the counterparty to the initiating party's agent confirming that the presented party and/or account identification information either correct or incorrect, it may include the correct party and/or account identification information. The message may be forwarded to the creator/ assigner of the IdentificationVerificationRequest message.

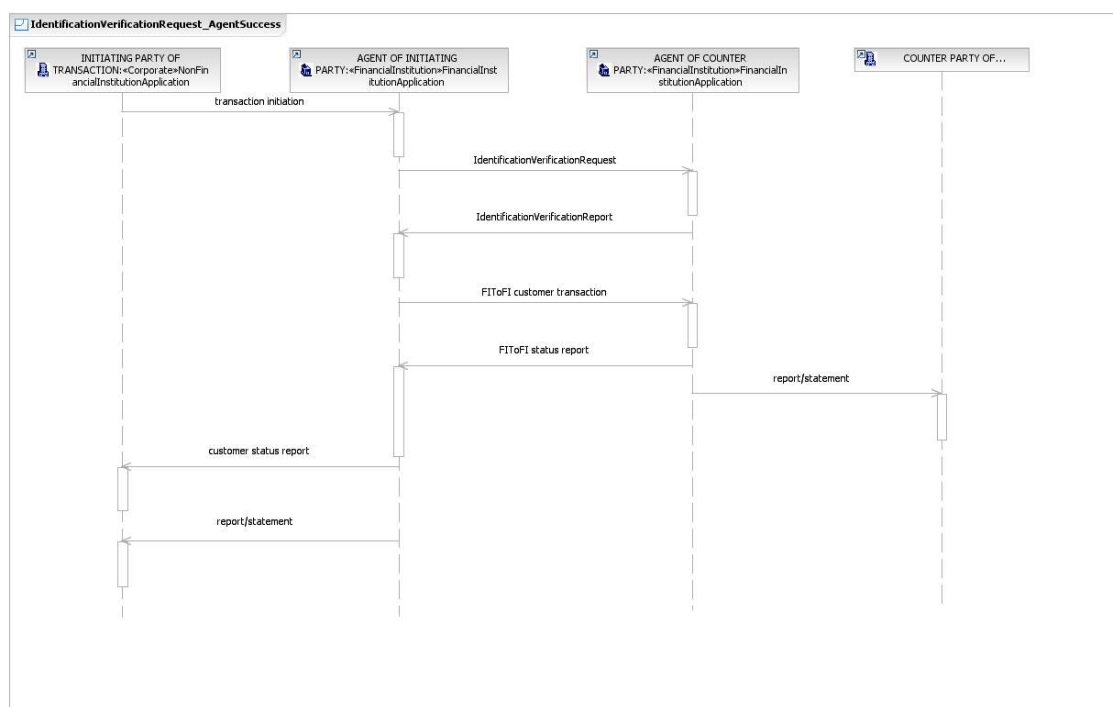


Scenario B:

The assigner (in this case the agent of the initiating party of a transaction) has received a customer transaction message. Before sending a FIToFI customer transaction the assigner sends an IdentificationVerificationRequest message to the assignee (in this case the agent of the counterparty of a transaction) requesting the verification of party and/or account identification information.

In response the agent of the counterparty sends an IdentificationVerificationReport message to the agent of the initiating party confirming that the presented party and/or account identification information is either correct or

incorrect, it may include the correct party and/or account identification information. The message may be forwarded to the initiating party of the customer transaction message.



Identification Verification Report

The IdentificationVerificationReport message is used to respond to an IdentificationVerificationRequest message. The message confirms whether or not the presented party and/or account identification information is correct. The message may include the correct party and/or account identification information.

The message flow of the IdentificationVerificationReport message is included in the scenarios of the IdentificationVerificationRequest message.

acmt.022.001.02 IdentificationModificationAdviceV02

Message Functionality

Scope

The IdentificationModificationAdvice message is sent by an assigner to an assignee. The message is used to advice on the correct party and/or account identification information.

Usage

The IdentificationModificationAdvice message is sent after the receipt of one or several transaction messages that included no longer valid party and/or account identification information.

The IdentificationModificationAdvice message is exchanged between financial institutions and between financial institutions and non financial institutions and can contain one or more modification advises.

There is no time limit on the time between the sending of an IdentificationModificationAdvice message and the receipt of the transaction messages that the IdentificationModificationAdvice refers to.

The IdentificationModificationAdvice includes the correct party and/or account identification information, the IdentificationModificationAdvice or the included information may be forwarded to the initiating party of the transaction messages.

Outline

The IdentificationModificationAdvice message is composed of three building blocks.

A. Assignment

This building block is mandatory and present once. It contains elements such as MessageIdentification and CreationDateTime.

B. OriginalTransactionReference

This building block is optional and present once. It contains elements such as MessageNameIdentification and Original Transaction of which the latter is optional and repetitive.

C. Modification

This building block is mandatory and repetitive. It contains elements related to party and account identification information such as OriginalPartyAndAccountIdentification and UpdatedPartyAndAccountIdentification.

Structure

Index	Or	Message Item	<XML Tag>	Mult.	Represent./ Type	Rule/ Guid. No.
		<i>Message root</i>	<IdModAdv>	[1..1]		

Index	Or	Message Item	<XML Tag>	Mult.	Represent./ Type	Rule/ Guid. No.
<u>1.0</u>		Assignment	<Assgnmt>	[1..1]		
<u>1.1</u>		MessageIdentification	<MsgId>	[1..1]	Text	

Index	Or	Message Item	<XML Tag>	Mult.	Represent./ Type	Rule/ Guid. No.
<u>1.2</u>		CreationDateTime	<CreDtTm>	[1..1]	DateTime	
<u>1.3</u>		Creator	<Cretr>	[0..1]		
<u>1.4</u>	{ Or Or }	Party	<Pty>	[1..1]	±	
<u>1.5</u>		Agent	<Agt>	[1..1]	±	
<u>1.6</u>		FirstAgent	<FrstAgt>	[0..1]	±	
<u>1.7</u>		Assigner	<Assgnr>	[1..1]		
<u>1.8</u>	{ Or Or }	Party	<Pty>	[1..1]	±	
<u>1.9</u>		Agent	<Agt>	[1..1]	±	
<u>1.10</u>		Assignee	<Assgne>	[1..1]		
<u>1.11</u>	{ Or Or }	Party	<Pty>	[1..1]	±	
<u>1.12</u>		Agent	<Agt>	[1..1]	±	

Index	Or	Message Item	<XML Tag>	Mult.	Represent./ Type	Rule/ Guid. No.
<u>2.0</u>		OriginalTransactionReference	<OrgnlTxRef>	[0..1]	±	

Index	Or	Message Item	<XML Tag>	Mult.	Represent./ Type	Rule/ Guid. No.
<u>3.0</u>		Modification	<Mod>	[1..*]		
<u>3.1</u>		Identification	<Id>	[1..1]	Text	
<u>3.2</u>		OriginalPartyAndAccountIdentification	<OrgnlPtyAndAcctId >	[0..1]		
<u>3.3</u>		Party	<Pty>	[0..1]	±	
<u>3.4</u>		Account	<Acct>	[0..1]	±	
<u>3.5</u>		Agent	<Agt>	[0..1]	±	
<u>3.6</u>		UpdatedPartyAndAccountIdentification	<UpdtdPtyAndAcctId >	[1..1]		
<u>3.7</u>		Party	<Pty>	[0..1]	±	
<u>3.8</u>		Account	<Acct>	[0..1]	±	
<u>3.9</u>		Agent	<Agt>	[0..1]	±	
<u>3.10</u>		AdditionalInformation	<AddtlInf>	[0..1]	Text	

Index	Or	Message Item	<XML Tag>	Mult.	Represent./ Type	Rule/ Guid. No.
<u>4.0</u>		SupplementaryData	<SplmtryData>	[0..*]		<u>R5</u>
<u>4.1</u>		PlaceAndName	<PlcAndNm>	[0..1]	Text	
<u>4.2</u>		Envelope	<Envlp>	[1..1]		
<u>4.3</u>		Contents	(User Defined)	[1..1]		

Rules and Guidelines

Rules

R1 Country

The code is checked against the list of country names obtained from the United Nations (ISO 3166, Alpha-2 code).

*This Rule also impacts **PartyIdentification43** Type. Please refer to 'Message Item Types' section p.84 for additional information.*

*This Rule also impacts **BranchAndFinancialInstitutionIdentification5** Type. Please refer to 'Message Item Types' section p.63 for additional information.*

*This Rule also impacts **OriginalTransactionReference18** Type. Please refer to 'Message Item Types' section p.72 for additional information.*

R2 AnyBIC

Only a valid Business identifier code is allowed. Business identifier codes for financial or non-financial institutions are registered by the ISO 9362 Registration Authority in the BIC directory, and consists of eight (8) or eleven (11) contiguous characters comprising the first three or all four of the following components: INSTITUTION CODE, COUNTRY CODE, LOCATION CODE, BRANCH CODE. The institution code, country code and location code are mandatory, while the branch code is optional.

*This Rule also impacts **PartyIdentification43** Type. Please refer to 'Message Item Types' section p.84 for additional information.*

R3 BICFI

Valid BICs for financial institutions are registered by the ISO 9362 Registration Authority in the BIC directory, and consist of eight (8) or eleven (11) contiguous characters comprising the first three or all four of the following components: INSTITUTION CODE, COUNTRY CODE, LOCATION CODE, BRANCH CODE. The institution code, country code and location code are mandatory, while the branch code is optional.

*This Rule also impacts **BranchAndFinancialInstitutionIdentification5** Type. Please refer to 'Message Item Types' section p.63 for additional information.*

*This Rule also impacts **OriginalTransactionReference18** Type. Please refer to 'Message Item Types' section p.72 for additional information.*

R4 IBAN

A valid IBAN consists of all three of the following components: Country Code, check digits and BBAN.

*This Rule also impacts **AccountIdentification4Choice** Type. Please refer to 'Message Item Types' section p.61 for additional information.*

R5 SupplementaryDataRule

This component may not be used without the explicit approval of a SEG and submission to the RA of ISO 20022 compliant structure(s) to be used in the Envelope element.

Message Items Description

*The following section identifies the elements of the **IdentificationModificationAdviceV02** message definition.*

1.0 Assignment <Assgnmt>

Presence: [1..1]

Definition: Identifies the identification assignment.

Type: *The Assignment block is composed of the following IdentificationAssignment2 element(s):*

Index	Or	Message Item	<XML Tag>	Mult.	Represent./ Type
<u>1.1</u>		MessageIdentification	<MsgId>	[1..1]	Text
<u>1.2</u>		CreationDateTime	<CreDtTm>	[1..1]	DateTime
<u>1.3</u>		Creator	<Cretr>	[0..1]	
<u>1.6</u>		FirstAgent	<FrstAgt>	[0..1]	±
<u>1.7</u>		Assigner	<Assgnr>	[1..1]	
<u>1.10</u>		Assignee	<Assgne>	[1..1]	

1.1 MessageIdentification <MsgId>

Presence: [1..1]

Definition: Point to point reference, as assigned by the assigner, and sent to the next party in the chain to unambiguously identify the message.

Usage: The assigner has to make sure that MessageIdentification is unique per assignee for a pre-agreed period.

Data Type: Max35Text

Format: maxLength: 35

minLength: 1

1.2 CreationDateTime <CreDtTm>

Presence: [1..1]

Definition: Date and time at which the identification assignment was created.

Data Type: ISODatetime

1.3 Creator <Cretr>

Presence: [0..1]

Definition: Party that created the identification assignment.

Type: *This message item is composed of one of the following Party12Choice element(s):*

Index	Or	Message Item	<XML Tag>	Mult.	Represent./ Type
<u>1.4</u>	{Or	Party	<Pty>	[1..1]	±
<u>1.5</u>	Or}	Agent	<Agt>	[1..1]	±

1.4 Party <Pty>

Presence: [1..1]

This message item is part of choice 1.3 Creator.

Definition: Identification of a person or an organisation.

Type: This message item is composed of the following **PartyIdentification43** element(s):

Or	Message Item	<XML Tag>	Mult.	Represent./ Type
	Name	<Nm>	[0..1]	Text
	PostalAddress	<PstlAdr>	[0..1]	
	Identification	<Id>	[0..1]	
	CountryOfResidence	<CtryOfRes>	[0..1]	Code
	ContactDetails	<CtctDtls>	[0..1]	

For additional Type information, please refer to **PartyIdentification43** p.84 in 'Message Item Types' section.

1.5 Agent <Agt>

Presence: [1..1]

This message item is part of choice **1.3 Creator**.

Definition: Identification of a financial institution.

Type: This message item is composed of the following **BranchAndFinancialInstitutionIdentification5** element(s):

Or	Message Item	<XML Tag>	Mult.	Represent./ Type
	FinancialInstitutionIdentification	<FinInstnId>	[1..1]	
	BranchIdentification	<BrnchId>	[0..1]	

For additional Type information, please refer to **BranchAndFinancialInstitutionIdentification5** p.63 in 'Message Item Types' section.

1.6 FirstAgent <FrstAgt>

Presence: [0..1]

Definition: Identifies the first agent in the identification chain, following the payment initiating party.

Type: This message item is composed of the following **BranchAndFinancialInstitutionIdentification5** element(s):

Or	Message Item	<XML Tag>	Mult.	Represent./ Type
	FinancialInstitutionIdentification	<FinInstnId>	[1..1]	
	BranchIdentification	<BrnchId>	[0..1]	

For additional Type information, please refer to **BranchAndFinancialInstitutionIdentification5** p.63 in 'Message Item Types' section.

1.7 Assigner <Assgnr>

Presence: [1..1]

Definition: Party that assigns the identification assignment to another party. This is also the sender of the message.

Type: This message item is composed of one of the following **Party12Choice** element(s):

Index	Or	Message Item	<XML Tag>	Mult.	Represent./ Type
<u>1.8</u>	{Or	Party	<Pty>	[1..1]	±
<u>1.9</u>	Or}	Agent	<Agt>	[1..1]	±

1.8 Party <Pty>

Presence: [1..1]

*This message item is part of choice **1.7 Assigner**.*

Definition: Identification of a person or an organisation.

Type: *This message item is composed of the following **PartyIdentification43** element(s):*

Or	Message Item	<XML Tag>	Mult.	Represent./ Type
	Name	<Nm>	[0..1]	Text
	PostalAddress	<PstlAdr>	[0..1]	
	Identification	<Id>	[0..1]	
	CountryOfResidence	<CtryOfRes>	[0..1]	Code
	ContactDetails	<CtctDtls>	[0..1]	

*For additional Type information, please refer to **PartyIdentification43** p.84 in 'Message Item Types' section.*

1.9 Agent <Agt>

Presence: [1..1]

*This message item is part of choice **1.7 Assigner**.*

Definition: Identification of a financial institution.

Type: *This message item is composed of the following **BranchAndFinancialInstitutionIdentification5** element(s):*

Or	Message Item	<XML Tag>	Mult.	Represent./ Type
	FinancialInstitutionIdentification	<FinInstnId>	[1..1]	
	BranchIdentification	<BrnchId>	[0..1]	

*For additional Type information, please refer to **BranchAndFinancialInstitutionIdentification5** p.63 in 'Message Item Types' section.*

1.10 Assignee <Assgne>

Presence: [1..1]

Definition: Party that the identification assignment is assigned to. This is also the receiver of the message.

Type: *This message item is composed of one of the following **Party12Choice** element(s):*

Index	Or	Message Item	<XML Tag>	Mult.	Represent./ Type
<u>1.11</u>	{Or	Party	<Pty>	[1..1]	±
<u>1.12</u>	Or}	Agent	<Agt>	[1..1]	±

1.11 Party <Pty>

Presence: [1..1]

This message item is part of choice 1.10 Assignee.

Definition: Identification of a person or an organisation.

Type: This message item is composed of the following **PartyIdentification43** element(s):

Or	Message Item	<XML Tag>	Mult.	Represent./ Type
	Name	<Nm>	[0..1]	Text
	PostalAddress	<PstlAdr>	[0..1]	
	Identification	<Id>	[0..1]	
	CountryOfResidence	<CtryOfRes>	[0..1]	Code
	ContactDetails	<CtctDtls>	[0..1]	

For additional Type information, please refer to **PartyIdentification43** p.84 in 'Message Item Types' section.

1.12 Agent <Agt>

Presence: [1..1]

This message item is part of choice 1.10 Assignee.

Definition: Identification of a financial institution.

Type: This message item is composed of the following **BranchAndFinancialInstitutionIdentification5** element(s):

Or	Message Item	<XML Tag>	Mult.	Represent./ Type
	FinancialInstitutionIdentification	<FinInstnId>	[1..1]	
	BranchIdentification	<BrnchId>	[0..1]	

For additional Type information, please refer to **BranchAndFinancialInstitutionIdentification5** p.63 in 'Message Item Types' section.

2.0 OriginalTransactionReference <OrgnlTxRef>

Presence: [0..1]

Definition: Provides reference information on the original message.

Type: This message item is composed of the following **OriginalTransactionReference18** element(s):

Or	Message Item	<XML Tag>	Mult.	Represent./ Type
	MessageIdentification	<MsgId>	[0..1]	Text
	MessageNameIdentification	<MsgNmId>	[0..1]	Text
	CreationDateTime	<CreDtTm>	[0..1]	DateTime
	OriginalTransaction	<OrgnlTx>	[0..*]	

For additional Type information, please refer to **OriginalTransactionReference18** p.72 in 'Message Item Types' section.

3.0 Modification <Mod>

Presence: [1..*]

Definition: Information concerning the identification data that is advised to be modified.

Type: The **Modification** block is composed of the following **IdentificationModification2** element(s):

Index	Or	Message Item	<XML Tag>	Mult.	Represent./ Type
3.1		Identification	<Id>	[1..1]	Text
3.2		OriginalPartyAndAccountIdentification	<OrgnlPtyAndAcctId>	[0..1]	
3.6		UpdatedPartyAndAccountIdentification	<UpdtdPtyAndAcctId>	[1..1]	
3.10		AdditionalInformation	<AddtlInf>	[0..1]	Text

3.1 Identification <Id>

Presence: [1..1]

Definition: Unique identification, as assigned by a sending party, to unambiguously identify the party and account identification information group within the message.

Data Type: Max35Text

Format: maxLength: 35

minLength: 1

3.2 OriginalPartyAndAccountIdentification <OrgnlPtyAndAcctId>

Presence: [0..1]

Definition: Provides party and/or account identification information as given in the original message.

Type: This message item is composed of the following **IdentificationInformation2** element(s):

Index	Or	Message Item	<XML Tag>	Mult.	Represent./ Type
3.3		Party	<Pty>	[0..1]	±
3.4		Account	<Acct>	[0..1]	±
3.5		Agent	<Agt>	[0..1]	±

3.3 Party <Pty>

Presence: [0..1]

Definition: Account owner that owes an amount of money or to whom an amount of money is due.

Type: This message item is composed of the following **PartyIdentification43** element(s):

Or	Message Item	<XML Tag>	Mult.	Represent./ Type
	Name	<Nm>	[0..1]	Text
	PostalAddress	<PstlAdr>	[0..1]	
	Identification	<Id>	[0..1]	
	CountryOfResidence	<CtryOfRes>	[0..1]	Code
	ContactDetails	<CtctDtls>	[0..1]	

For additional Type information, please refer to **PartyIdentification43** p.84 in 'Message Item Types' section.

3.4 Account <Acct>

Presence: [0..1]

Definition: Unambiguous identification of the account of a party.

Type: This message item is composed of one of the following **AccountIdentification4Choice** element(s):

Or	Message Item	<XML Tag>	Mult.	Represent./ Type
{Or	IBAN	<IBAN>	[1..1]	Identifier
Or}	Other	<Othr>	[1..1]	

For additional Type information, please refer to **AccountIdentification4Choice** p.61 in 'Message Item Types' section.

3.5 Agent <Agt>

Presence: [0..1]

Definition: Financial institution servicing an account for a party.

Type: This message item is composed of the following **BranchAndFinancialInstitutionIdentification5** element(s):

Or	Message Item	<XML Tag>	Mult.	Represent./ Type
	FinancialInstitutionIdentification	<FinInstnId>	[1..1]	
	BranchIdentification	<BrnchId>	[0..1]	

For additional Type information, please refer to **BranchAndFinancialInstitutionIdentification5** p.63 in 'Message Item Types' section.

3.6 UpdatedPartyAndAccountIdentification <UpdtdPtyAndAcctId>

Presence: [1..1]

Definition: Provides updated party and/or account identification information.

Type: This message item is composed of the following **IdentificationInformation2** element(s):

Index	Or	Message Item	<XML Tag>	Mult.	Represent./ Type
<u>3.7</u>		Party	<Pty>	[0..1]	±
<u>3.8</u>		Account	<Acct>	[0..1]	±
<u>3.9</u>		Agent	<Agt>	[0..1]	±

3.7 Party <Pty>

Presence: [0..1]

Definition: Account owner that owes an amount of money or to whom an amount of money is due.

Type: This message item is composed of the following **PartyIdentification43** element(s):

Or	Message Item	<XML Tag>	Mult.	Represent./ Type
	Name	<Nm>	[0..1]	Text
	PostalAddress	<PstlAdr>	[0..1]	
	Identification	<Id>	[0..1]	
	CountryOfResidence	<CtryOfRes>	[0..1]	Code
	ContactDetails	<CtctDtls>	[0..1]	

For additional Type information, please refer to **PartyIdentification43** p.84 in 'Message Item Types' section.

3.8 Account <Acct>

Presence: [0..1]

Definition: Unambiguous identification of the account of a party.

Type: This message item is composed of one of the following **AccountIdentification4Choice** element(s):

Or	Message Item	<XML Tag>	Mult.	Represent./ Type
{ Or	IBAN	<IBAN>	[1..1]	Identifier
Or }	Other	<Othr>	[1..1]	

For additional Type information, please refer to **AccountIdentification4Choice** p.61 in 'Message Item Types' section.

3.9 Agent <Agt>

Presence: [0..1]

Definition: Financial institution servicing an account for a party.

Type: This message item is composed of the following **BranchAndFinancialInstitutionIdentification5** element(s):

Or	Message Item	<XML Tag>	Mult.	Represent./ Type
	FinancialInstitutionIdentification	<FinInstnId>	[1..1]	
	BranchIdentification	<BrnchId>	[0..1]	

For additional Type information, please refer to **BranchAndFinancialInstitutionIdentification5** p.63 in 'Message Item Types' section.

3.10 AdditionalInformation <AddtlInf>

Presence: [0..1]

Definition: Additional information, in free text form, to complement the modification information.

Data Type: Max140Text

Format: maxLength: 140
minLength: 1

4.0 SupplementaryData <SplmtryData>

Presence: [0..*]

Impacted by: R5

Definition: Additional information that cannot be captured in the structured elements and/or any other specific block.

Type: *The **SupplementaryData** block is composed of the following **SupplementaryData1** element(s):*

Index	Or	Message Item	<XML Tag>	Mult.	Represent./ Type
<u>4.1</u>		PlaceAndName	<PlcAndNm>	[0..1]	Text
<u>4.2</u>		Envelope	<Envlp>	[1..1]	

Rule(s): SupplementaryDataRule

This component may not be used without the explicit approval of a SEG and submission to the RA of ISO 20022 compliant structure(s) to be used in the Envelope element.

4.1 PlaceAndName <PlcAndNm>

Presence: [0..1]

Definition: Unambiguous reference to the location where the supplementary data must be inserted in the message instance.

In the case of XML, this is expressed by a valid XPath.

Data Type: Max350Text

Format: maxLength: 350
minLength: 1

4.2 Envelope <Envlp>

Presence: [1..1]

Definition: Technical element wrapping the supplementary data.

Type: *This message item is composed of the following **SupplementaryDataEnvelope1** element(s):*

Index	Or	Message Item	<XML Tag>	Mult.	Represent./ Type
<u>4.3</u>		Contents	(User Defined)	[1..1]	

4.3 Contents (User Defined)

Presence: [1..1]

Definition: Technical element that specifies the supplementary data.

Type: (User Defined)

This content will be validated on a can do basis.

It may contain any XML structure.

Business Example

Narrative

On 9 April 2012 bank AAAAFRDD received a FIToFI customer transaction message from bank CCCCFTTT. Due to a recent merger the structure of the account numbers held at AAAAFRDD have changed. The transaction message included two instructions, one to credit mr. Jones and one to credit mr. Dobbs. In both cases the account number was quoted in the structure from before the merger. AAAAFRDD mapped the account numbers to the new structure and settled the one instruction on the account of customer Jones and the other on the account of mr. Dobbs.

AAAAFRDD sends an IdentificationModificationAdvice message to CCCCFTT to advise CCCCFTT on the changed account number structure for both customer Jones and Dobbs. On receipt of the IdentificationModificationAdvice bank CCCCFTT informs his customer, the initiating party of the transactions, of this change with the request to update its database for future usage.

Business Description

IdentificationModificationAdvice message from AAAAFRDD to CCCCFTT:

<i>Element</i>	<i><XMLTag></i>	<i>Content</i>
Assignment	<Assgnmt>	
MessageIdentification	<MsgId>	AAAA/067709-CBJ056
CreationDateTime	<CredDtTm>	2012-04-09T11:00:00
Assigner	<Assgnr>	
Agent	<Agt>	
FinancialInstitutionIdentification	<FinInstnId>	
BICFI	<BICFI>	AAAAFRDD
Assignee	<Assgne>	
Agent	<Agt>	
FinancialInstitutionIdentification	<FinInstnId>	
BICFI	<BICFI>	CCCCFTT
OriginalTransactionReference	<OrgnlTxRef>	
MessageIdentification	<MsgId>	CCCC-2567/A063
MessageNameIdentification	<MsgNmId>	pacs.008.001.03
CreationDateTime	<CreDtTm>	2012-04-05T08:00:00
Modification	<Mod>	
Identification	<Id>	Mod2012-01020/Jones-556839
OriginalPartyAndAccountIdentification	<OrgnlPtyAndAcctId>	
Account	<Acct>	
Other	<Othr>	
Id	<Id>	5544732
UpdatedPartyAndAccountIdentification	<UpdtdPtyAndAcctId>	
Account	<Acct>	
Other	<Othr>	
Id	<Id>	789005544732
AdditionalInformation	<AddtlInf>	change account number due to merger
Modification	<Mod>	
Identification	<Id>	Mod2012-01021/Dobbs-556361
OriginalPartyAndAccountIdentification	<OrgnlPtyAndAcctId>	
Account	<Acct>	
Other	<Othr>	

Id	<Id>	5633862
UpdatedPartyAndAccountIdentification	<UpdtdPtyAndAcctId>	
Account	<Acct>	
Other	<Othr>	
Id	<Id>	78900563362
AdditionalInformation	<AddtlInf>	change account number due to merger

XML Instance

```

<IdModAdv>
  <Assgnmt>
    <MsgId>AAAA/067709-CBJ056</MsgId>
    <CreDtTm>2012-04-09T11:00:00</CreDtTm>
    <Assgnr>
      <Agt>
        <FinInstnId>
          <BICFI>AAAAFRDD</BICFI>
        </FinInstnId>
      </Agt>
    </Assgnr>
    <Assgne>
      <Agt>
        <FinInstnId>
          <BICFI>CCCCFRTT</BICFI>
        </FinInstnId>
      </Agt>
    </Assgne>
  </Assgnmt>
  <OrgnlTxRef>
    <MsgId>CCCC-2567/A063</MsgId>
    <MsgNmId>pacs.008.001.03</MsgNmId>
    <CreDtTm>2012-04-05T08:00:00</CreDtTm>
  </OrgnlTxRef>
  <Mod>
    <Id>Mod2012-01020/Jones-556839</Id>
    <OrgnlPtyAndAcctId>
      <Acct>
        <Othr>
          <Id>5544732</Id>
        </Othr>
      </Acct>
    </OrgnlPtyAndAcctId>
    <UpdtdPtyAndAcctId>
      <Acct>
        <Othr>
          <Id>789005544732</Id>
        </Othr>
      </Acct>
    </UpdtdPtyAndAcctId>
  </Mod>
</IdModAdv>

```

```
<AddtlInf>Change account number due to merger</AddtlInf>
</Mod>
<Mod>
  <Id>Mod2012-01021/Dobbs-556361</Id>
  <OrgnlPtyAndAcctId>
    <Acct>
      <Othr>
        <Id>5633862</Id>
      </Othr>
    </Acct>
  </OrgnlPtyAndAcctId>
  <UpdtdPtyAndAcctId>
    <Acct>
      <Othr>
        <Id>78900563362</Id>
      </Othr>
    </Acct>
  </UpdtdPtyAndAcctId>
  <AddtlInf>change account number due to merger</AddtlInf>
</Mod>
</IdModAdv>
```

acmt.023.001.02 IdentificationVerificationRequestV02

Message Functionality

Scope

The IdentificationVerificationRequest message is sent by an assigner to an assignee. It is used to request the verification of party and/or account identification information.

Usage

The IdentificationVerificationRequest message is sent before the sending of one or several transactions messages. The IdentificationVerificationRequest message can contain one or more verification requests.

Outline

The IdentificationVerificationRequest message is composed of two building blocks.

A. Assignment

This building block is mandatory and present once. It contains elements such as MessageIdentification and CreationDateTime.

B. Verification

This building block is mandatory and repetitive. It contains elements related to the requested verification such as PartyAndAccountIdentification.

Structure

Index	Or	Message Item	<XML Tag>	Mult.	Represent./ Type	Rule/ Guid. No.
		<i>Message root</i>	<IdVrfctnReq>	[1..1]		

Index	Or	Message Item	<XML Tag>	Mult.	Represent./ Type	Rule/ Guid. No.
<u>1.0</u>		Assignment	<Assgnmt>	[1..1]		
<u>1.1</u>		MessageIdentification	<MsgId>	[1..1]	Text	
<u>1.2</u>		CreationDateTime	<CreDtTm>	[1..1]	DateTime	
<u>1.3</u>		Creator	<Cretr>	[0..1]		
<u>1.4</u>	{Or	Party	<Pty>	[1..1]	±	
<u>1.5</u>	Or}	Agent	<Agt>	[1..1]	±	
<u>1.6</u>		FirstAgent	<FrstAgt>	[0..1]	±	
<u>1.7</u>		Assigner	<Assgnr>	[1..1]		
<u>1.8</u>	{Or	Party	<Pty>	[1..1]	±	
<u>1.9</u>	Or}	Agent	<Agt>	[1..1]	±	

Index	Or	Message Item	<XML Tag>	Mult.	Represent./ Type	Rule/ Guid. No.
<u>1.10</u>		Assignee	<Assgne>	[1..1]		
<u>1.11</u>	{Or	Party	<Pty>	[1..1]	±	
<u>1.12</u>	Or}	Agent	<Agt>	[1..1]	±	

Index	Or	Message Item	<XML Tag>	Mult.	Represent./ Type	Rule/ Guid. No.
<u>2.0</u>		Verification	<Vrfctn>	[1..*]		
<u>2.1</u>		Identification	<Id>	[1..1]	Text	
<u>2.2</u>		PartyAndAccountIdentification	<PtyAndAcctId>	[1..1]		
<u>2.3</u>		Party	<Pty>	[0..1]	±	
<u>2.4</u>		Account	<Acct>	[0..1]	±	
<u>2.5</u>		Agent	<Agt>	[0..1]	±	

Index	Or	Message Item	<XML Tag>	Mult.	Represent./ Type	Rule/ Guid. No.
<u>3.0</u>		SupplementaryData	<SplmtryData>	[0..*]		<u>R5</u>
<u>3.1</u>		PlaceAndName	<PlcAndNm>	[0..1]	Text	
<u>3.2</u>		Envelope	<Envlp>	[1..1]		
<u>3.3</u>		Contents	(User Defined)	[1..1]		

Rules and Guidelines

Rules

R1 Country

The code is checked against the list of country names obtained from the United Nations (ISO 3166, Alpha-2 code).
*This Rule also impacts **PartyIdentification43** Type. Please refer to 'Message Item Types' section p.84 for additional information.*

*This Rule also impacts **BranchAndFinancialInstitutionIdentification5** Type. Please refer to 'Message Item Types' section p.63 for additional information.*

R2 AnyBIC

Only a valid Business identifier code is allowed. Business identifier codes for financial or non-financial institutions are registered by the ISO 9362 Registration Authority in the BIC directory, and consists of eight (8) or eleven (11) contiguous characters comprising the first three or all four of the following components: INSTITUTION CODE, COUNTRY CODE, LOCATION CODE, BRANCH CODE. The institution code, country code and location code are mandatory, while the branch code is optional.

*This Rule also impacts **PartyIdentification43** Type. Please refer to 'Message Item Types' section p.84 for additional information.*

R3 BICFI

Valid BICs for financial institutions are registered by the ISO 9362 Registration Authority in the BIC directory, and consist of eight (8) or eleven (11) contiguous characters comprising the first three or all four of the following components: INSTITUTION CODE, COUNTRY CODE, LOCATION CODE, BRANCH CODE. The institution code, country code and location code are mandatory, while the branch code is optional.

*This Rule also impacts **BranchAndFinancialInstitutionIdentification5** Type. Please refer to 'Message Item Types' section p.63 for additional information.*

R4 IBAN

A valid IBAN consists of all three of the following components: Country Code, check digits and BBAN.

*This Rule also impacts **AccountIdentification4Choice** Type. Please refer to 'Message Item Types' section p.61 for additional information.*

R5 SupplementaryDataRule

This component may not be used without the explicit approval of a SEG and submission to the RA of ISO 20022 compliant structure(s) to be used in the Envelope element.

Message Items Description

*The following section identifies the elements of the **IdentificationVerificationRequestV02** message definition.*

1.0 Assignment <Assgnmt>

Presence: [1..1]

Definition: Identifies the identification assignment.

Type: The **Assignment** block is composed of the following **IdentificationAssignment2** element(s):

Index	Or	Message Item	<XML Tag>	Mult.	Represent./ Type
<u>1.1</u>		MessageIdentification	<MsgId>	[1..1]	Text
<u>1.2</u>		CreationDateTime	<CreDtTm>	[1..1]	DateTime
<u>1.3</u>		Creator	<Cretr>	[0..1]	
<u>1.6</u>		FirstAgent	<FrstAgt>	[0..1]	±
<u>1.7</u>		Assigner	<Assgnr>	[1..1]	
<u>1.10</u>		Assignee	<Assgne>	[1..1]	

1.1 MessageIdentification <MsgId>

Presence: [1..1]

Definition: Point to point reference, as assigned by the assigner, and sent to the next party in the chain to unambiguously identify the message.

Usage: The assigner has to make sure that MessageIdentification is unique per assignee for a pre-agreed period.

Data Type: Max35Text

Format: maxLength: 35
minLength: 1

1.2 CreationDateTime <CreDtTm>

Presence: [1..1]

Definition: Date and time at which the identification assignment was created.

Data Type: ISODatetime

1.3 Creator <Cretr>

Presence: [0..1]

Definition: Party that created the identification assignment.

Type: This message item is composed of one of the following **Party12Choice** element(s):

Index	Or	Message Item	<XML Tag>	Mult.	Represent./ Type
<u>1.4</u>	{Or	Party	<Pty>	[1..1]	±
<u>1.5</u>	Or}	Agent	<Agt>	[1..1]	±

1.4 Party <Pty>

Presence: [1..1]

This message item is part of choice **1.3 Creator**.

Definition: Identification of a person or an organisation.

Type: This message item is composed of the following **PartyIdentification43** element(s):

Or	Message Item	<XML Tag>	Mult.	Represent./ Type
	Name	<Nm>	[0..1]	Text
	PostalAddress	<PstlAdr>	[0..1]	
	Identification	<Id>	[0..1]	
	CountryOfResidence	<CtryOfRes>	[0..1]	Code
	ContactDetails	<CtctDtls>	[0..1]	

For additional Type information, please refer to **PartyIdentification43** p.84 in 'Message Item Types' section.

1.5 Agent <Agt>

Presence: [1..1]

This message item is part of choice **1.3 Creator**.

Definition: Identification of a financial institution.

Type: This message item is composed of the following **BranchAndFinancialInstitutionIdentification5** element(s):

Or	Message Item	<XML Tag>	Mult.	Represent./ Type
	FinancialInstitutionIdentification	<FinInstnId>	[1..1]	
	BranchIdentification	<BrnchId>	[0..1]	

For additional Type information, please refer to **BranchAndFinancialInstitutionIdentification5** p.63 in 'Message Item Types' section.

1.6 FirstAgent <FrstAgt>

Presence: [0..1]

Definition: Identifies the first agent in the identification chain, following the payment initiating party.

Type: This message item is composed of the following **BranchAndFinancialInstitutionIdentification5** element(s):

Or	Message Item	<XML Tag>	Mult.	Represent./Type
	FinancialInstitutionIdentification	<FinInstnId>	[1..1]	
	BranchIdentification	<BrnchId>	[0..1]	

For additional Type information, please refer to **BranchAndFinancialInstitutionIdentification5** p.63 in 'Message Item Types' section.

1.7 Assigner <Assgnr>

Presence: [1..1]

Definition: Party that assigns the identification assignment to another party. This is also the sender of the message.

Type: This message item is composed of one of the following **Party12Choice** element(s):

Index	Or	Message Item	<XML Tag>	Mult.	Represent./Type
<u>1.8</u>	{Or	Party	<Pty>	[1..1]	±
<u>1.9</u>	Or}	Agent	<Agt>	[1..1]	±

1.8 Party <Pty>

Presence: [1..1]

This message item is part of choice **1.7 Assigner**.

Definition: Identification of a person or an organisation.

Type: This message item is composed of the following **PartyIdentification43** element(s):

Or	Message Item	<XML Tag>	Mult.	Represent./Type
	Name	<Nm>	[0..1]	Text
	PostalAddress	<PstlAdr>	[0..1]	
	Identification	<Id>	[0..1]	
	CountryOfResidence	<CtryOfRes>	[0..1]	Code
	ContactDetails	<CtctDtls>	[0..1]	

For additional Type information, please refer to **PartyIdentification43** p.84 in 'Message Item Types' section.

1.9 Agent <Agt>

Presence: [1..1]

This message item is part of choice **1.7 Assigner**.

Definition: Identification of a financial institution.

Type: This message item is composed of the following **BranchAndFinancialInstitutionIdentification5** element(s):

Or	Message Item	<XML Tag>	Mult.	Represent./ Type
	FinancialInstitutionIdentification	<FinInstnId>	[1..1]	
	BranchIdentification	<BrnchId>	[0..1]	

For additional Type information, please refer to **BranchAndFinancialInstitutionIdentification5** p.63 in 'Message Item Types' section.

1.10 Assignee <Assgne>

Presence: [1..1]

Definition: Party that the identification assignment is assigned to. This is also the receiver of the message.

Type: This message item is composed of one of the following **Party12Choice** element(s):

Index	Or	Message Item	<XML Tag>	Mult.	Represent./ Type
<u>1.11</u>	{Or	Party	<Pty>	[1..1]	±
<u>1.12</u>	Or}	Agent	<Agt>	[1..1]	±

1.11 Party <Pty>

Presence: [1..1]

This message item is part of choice **1.10 Assignee**.

Definition: Identification of a person or an organisation.

Type: This message item is composed of the following **PartyIdentification43** element(s):

Or	Message Item	<XML Tag>	Mult.	Represent./ Type
	Name	<Nm>	[0..1]	Text
	PostalAddress	<PstlAdr>	[0..1]	
	Identification	<Id>	[0..1]	
	CountryOfResidence	<CtryOfRes>	[0..1]	Code
	ContactDetails	<CtctDtls>	[0..1]	

For additional Type information, please refer to **PartyIdentification43** p.84 in 'Message Item Types' section.

1.12 Agent <Agt>

Presence: [1..1]

This message item is part of choice **1.10 Assignee**.

Definition: Identification of a financial institution.

Type: This message item is composed of the following **BranchAndFinancialInstitutionIdentification5** element(s):

Or	Message Item	<XML Tag>	Mult.	Represent./ Type
	FinancialInstitutionIdentification	<FinInstnId>	[1..1]	
	BranchIdentification	<BrnchId>	[0..1]	

For additional Type information, please refer to **BranchAndFinancialInstitutionIdentification5** p.63 in 'Message Item Types' section.

2.0 Verification <Vrfctn>

Presence: [1..*]

Definition: Information concerning the identification data that is requested to be verified.

Type: The **Verification** block is composed of the following **IdentificationVerification2** element(s):

Index	Or	Message Item	<XML Tag>	Mult.	Represent./ Type
<u>2.1</u>		Identification	<Id>	[1..1]	Text
<u>2.2</u>		PartyAndAccountIdentification	<PtyAndAcctId>	[1..1]	

2.1 Identification <Id>

Presence: [1..1]

Definition: Unique identification, as assigned by a sending party, to unambiguously identify the party and account identification information group within the message.

Data Type: Max35Text

Format: maxLength: 35
minLength: 1

2.2 PartyAndAccountIdentification <PtyAndAcctId>

Presence: [1..1]

Definition: Party and/or account identification information for which verification is requested.

Type: This message item is composed of the following **IdentificationInformation2** element(s):

Index	Or	Message Item	<XML Tag>	Mult.	Represent./ Type
<u>2.3</u>		Party	<Pty>	[0..1]	±
<u>2.4</u>		Account	<Acct>	[0..1]	±
<u>2.5</u>		Agent	<Agt>	[0..1]	±

2.3 Party <Pty>

Presence: [0..1]

Definition: Account owner that owes an amount of money or to whom an amount of money is due.

Type: This message item is composed of the following **PartyIdentification43** element(s):

Or	Message Item	<XML Tag>	Mult.	Represent./ Type
	Name	<Nm>	[0..1]	Text
	PostalAddress	<PstlAdr>	[0..1]	
	Identification	<Id>	[0..1]	
	CountryOfResidence	<CtryOfRes>	[0..1]	Code
	ContactDetails	<CtctDtls>	[0..1]	

For additional Type information, please refer to **PartyIdentification43** p.84 in 'Message Item Types' section.

2.4 Account <Acct>

Presence: [0..1]

Definition: Unambiguous identification of the account of a party.

Type: This message item is composed of one of the following **AccountIdentification4Choice** element(s):

Or	Message Item	<XML Tag>	Mult.	Represent./ Type
{Or	IBAN	<IBAN>	[1..1]	Identifier
Or}	Other	<Othr>	[1..1]	

For additional Type information, please refer to **AccountIdentification4Choice** p.61 in 'Message Item Types' section.

2.5 Agent <Agt>

Presence: [0..1]

Definition: Financial institution servicing an account for a party.

Type: This message item is composed of the following **BranchAndFinancialInstitutionIdentification5** element(s):

Or	Message Item	<XML Tag>	Mult.	Represent./ Type
	FinancialInstitutionIdentification	<FinInstnId>	[1..1]	
	BranchIdentification	<BrnchId>	[0..1]	

For additional Type information, please refer to **BranchAndFinancialInstitutionIdentification5** p.63 in 'Message Item Types' section.

3.0 SupplementaryData <SplmtryData>

Presence: [0..*]

Impacted by: R5

Definition: Additional information that cannot be captured in the structured elements and/or any other specific block.

Type: The **SupplementaryData** block is composed of the following **SupplementaryData1** element(s):

Index	Or	Message Item	<XML Tag>	Mult.	Represent./ Type
<u>3.1</u>		PlaceAndName	<PlcAndNm>	[0..1]	Text
<u>3.2</u>		Envelope	<Envlp>	[1..1]	

Rule(s): SupplementaryDataRule

This component may not be used without the explicit approval of a SEG and submission to the RA of ISO 20022 compliant structure(s) to be used in the Envelope element.

3.1 PlaceAndName <PlcAndNm>

Presence: [0..1]

Definition: Unambiguous reference to the location where the supplementary data must be inserted in the message instance.

In the case of XML, this is expressed by a valid XPath.

Data Type: Max350Text

Format: maxLength: 350
minLength: 1

3.2 Envelope <Envlp>

Presence: [1..1]

Definition: Technical element wrapping the supplementary data.

Type: This message item is composed of the following *SupplementaryDataEnvelope1* element(s):

Index	Or	Message Item	<XML Tag>	Mult.	Represent./ Type
<u>3.3</u>		Contents	(User Defined)	[1..1]	

3.3 Contents (User Defined)

Presence: [1..1]

Definition: Technical element that specifies the supplementary data.

Type: (User Defined)

This content will be validated on a can do basis.

It may contain any XML structure.

Business Example 1

Narrative

Corporate Actions Inc. is preparing a customer transaction message. As part of the preparation Corporate Actions Inc. sends an IdentificationVerificationRequest message to his bank CCCCFR TT holding a request to verify the account number of creditor mr. Jones. Both Corporate Actions Inc. and mr. Jones are customers of CCCCFR TT. CCCCFR TT will verify the account identification information received and sent back an IdentificationVerificationReport message with the result.

Business Description

IdentificationVerificationRequest message from Corporate Actions Inc. to CCCCFR TT:

Element	<XML Tag>	Content
Assignment	<Assgnmt>	
MessageIdentification	<MsgId>	CA-0023896
CreationDateTime	<CredDtTm>	2012-04-07T11:30:00
Creator	<Cretr>	
Party	<Pty>	
Name	<Nm>	Corporate Actions Inc.
Assigner	<Assgnr>	
Party	<Pty>	
Name	<Nm>	Corporate Actions Inc.

Assignee	<Assgne>	
Agent	<Agt>	
FinancialInstitutionIdentification	<FinInstnId>	
BICFI	<BICFI>	CCCCFRTT
Verification	<Vrctn>	
Identification	<Id>	VER-12365
PartyAndAccountIdentification	<PtyAndAcctId>	
Account	<Acct>	
IBAN	<IBAN>	FR430041020030300015M02606

XML Instance

```

<IdVrctnReq>
  <Assgnmt>
    <MsgId>CA-0023896</MsgId>
    <CreDtTm>2012-04-07T11:30:00</CreDtTm>
    <Cretr>
      <Pty>
        <Nm>Corporate Actions Inc.</Nm>
      </Pty>
    </Cretr>
    <Assgnr>
      <Pty>
        <Nm>Corporate Actions Inc.</Nm>
      </Pty>
    </Assgnr>
    <Assgne>
      <Agt>
        <FinInstnId>
          <BICFI>CCCCFRTT</BICFI>
        </FinInstnId>
      </Agt>
    </Assgne>
  </Assgnmt>
  <Vrctn>
    <Id>VER-12365</Id>
    <PtyAndAcctId>
      <Acct>
        <IBAN>FR430041020030300015M02606</IBAN>
      </Acct>
    </PtyAndAcctId>
  </Vrctn>
</IdVrctnReq>

```

Business Example 2

Narrative

Bank BBBBDEFF has received a customer transaction message. Before sending a FIToFI customer transaction message to the bank of the counterparty, FFFFDECC, it sends an IdentificationVerificationRequest message to FFFFDECC to verify whether the account identification information is correct. FFFFDECC will respond with an IdentificationVerificationReport message confirming whether or not the identification information presented is correct.

Business Description

IdentificationVerificationRequest from BBBBDEFF to FFFFDECC:

<i>Element</i>	<i><XMLTag></i>	<i>Content</i>
Assignment	<Assgnmt>	
MessageIdentification	<MsgId>	BBBB-56812/559
CreationDateTime	<CredDtTm>	2012-04-08T16:30:00
Assigner	<Assgnr>	
Agent	<Agt>	
FinancialInstitutionIdentification	<FinInstId>	
BICFI	<BICFI>	BBBBDEFF
Assignee	<Assgne>	
Agent	<Agt>	
FinancialInstitutionIdentification	<FinInstnId>	
BICFI	<BICFI>	FFFFDECC
Verification	<Vrctn>	
Identification	<Id>	BBBBVER/2659-cust569887
PartyAndAccountIdentification	<PtyAndAcctId>	
Account	<Acct>	
IBAN	<IBAN>	DE00000006789123456789
Agent	<Agt>	
FinancialInstitutionIdentification	<FinInstnId>	
Name	<Nm>	Best Bank

XML Instance

```
<IdVrctnReq>
  <Assgnmt>
    <MsgId>BBBB-56812/559</MsgId>
    <CreDtTm>2012-04-08T16:30:00</CreDtTm>
    <Assgnr>
      <Agt>
        <FinInstnId>
          <BICFI>BBBBDEFF</BICFI>
```

```

    </FinInstnId>
  </Agt>
</Assgnr>
<Assgne>
  <Agt>
    <FinInstnId>
      <BICFI>FFFFDECC</BICFI>
    </FinInstnId>
  </Agt>
</Assgne>
</Assgnmt>
<Vrctn>
  <Id>BBBBVER/2659-cust569887</Id>
  <PtyAndAcctId>
    <Acct>
      <IBAN>DE00000006789123456789</IBAN>
    </Acct>
  <Agt>
    <FinInstnId>
      <Nm>Best Bank</Nm>
    </FinInstnId>
  </Agt>
  </PtyAndAcctId>
</Vrctn>
</IdVrctnReq>
```


acmt.024.001.02 IdentificationVerificationReportV02

Message Functionality

Scope

The IdentificationVerificationReport message is sent by an assigner to an assignee. It is used to confirm whether or not the presented party and/or account identification information is correct.

Usage

The IdentificationVerificationReport message is sent as a response to an IdentificationVerificationRequest message.

The IdentificationVerificationReport message can contain one or more reports.

The IdentificationVerificationReport message may include a reason if the presented party and/or account identification information is confirmed to be incorrect.

The IdentificationVerificationReport message may include the correct party and/or account identification information.

Outline

The IdentificationVerificationReport message is composed of three building blocks.

A. Assignment

This building block is mandatory and present once. It contains elements such as MessageIdentification and CreationDateTime.

B. Original Assignment

This building block is optional and present once. It contains elements such as Messageidentification and CreationDateTime.

C. Report

This building block is mandatory and repetitive. it contains elements related to the report on the requested verification such as Verification, Reason, OriginalPartyAndAccountIdentification and UpdatedPartyAndAccountIdentification.

Structure

Index	Or	Message Item	<XML Tag>	Mult.	Represent./ Type	Rule/ Guid. No.
		<i>Message root</i>	<IdVrfctnRpt>	[1..1]		

Index	Or	Message Item	<XML Tag>	Mult.	Represent./ Type	Rule/ Guid. No.
<u>1.0</u>		Assignment	<Assgnmt>	[1..1]		
<u>1.1</u>		MessageIdentification	<MsgId>	[1..1]	Text	
<u>1.2</u>		CreationDateTime	<CreDtTm>	[1..1]	DateTime	
<u>1.3</u>		Creator	<Cretr>	[0..1]		
<u>1.4</u>	{Or	Party	<Pty>	[1..1]	±	

Index	Or	Message Item	<XML Tag>	Mult.	Represent./ Type	Rule/ Guid. No.
<u>1.5</u>	Or}	Agent	<Agt>	[1..1]	±	
<u>1.6</u>		FirstAgent	<FrstAgt>	[0..1]	±	
<u>1.7</u>		Assigner	<Assgnr>	[1..1]		
<u>1.8</u>	{Or	Party	<Pty>	[1..1]	±	
<u>1.9</u>	Or}	Agent	<Agt>	[1..1]	±	
<u>1.10</u>		Assignee	<Assgne>	[1..1]		
<u>1.11</u>	{Or	Party	<Pty>	[1..1]	±	
<u>1.12</u>	Or}	Agent	<Agt>	[1..1]	±	

Index	Or	Message Item	<XML Tag>	Mult.	Represent./ Type	Rule/ Guid. No.
<u>2.0</u>		OriginalAssignment	<OrgnlAssgnmt>	[0..1]		
<u>2.1</u>		MessageIdentification	<MsgId>	[0..1]	Text	
<u>2.2</u>		CreationDateTime	<CreDtTm>	[0..1]	DateTime	
<u>2.3</u>		FirstAgent	<FrstAgt>	[0..1]	±	

Index	Or	Message Item	<XML Tag>	Mult.	Represent./ Type	Rule/ Guid. No.
<u>3.0</u>		Report	<Rpt>	[1..*]		
<u>3.1</u>		OriginalIdentification	<OrgnlId>	[1..1]	Text	
<u>3.2</u>		Verification	<Vrfctn>	[1..1]	Indicator	
<u>3.3</u>		Reason	<Rsn>	[0..1]		
<u>3.4</u>	{Or	Code	<Cd>	[1..1]	Text	
<u>3.5</u>	Or}	Proprietary	<Prtry>	[1..1]	Text	
<u>3.6</u>		OriginalPartyAndAccountIdentification	<OrgnlPtyAndAcctId>	[0..1]		
<u>3.7</u>		Party	<Pty>	[0..1]	±	
<u>3.8</u>		Account	<Acct>	[0..1]	±	
<u>3.9</u>		Agent	<Agt>	[0..1]	±	
<u>3.10</u>		UpdatedPartyAndAccountIdentification	<UpdtdPtyAndAcctId>	[0..1]		
<u>3.11</u>		Party	<Pty>	[0..1]	±	
<u>3.12</u>		Account	<Acct>	[0..1]	±	

Index	Or	Message Item	<XML Tag>	Mult.	Represent./ Type	Rule/ Guid. No.
<u>3.13</u>		Agent	<Agt>	[0..1]	±	

Index	Or	Message Item	<XML Tag>	Mult.	Represent./ Type	Rule/ Guid. No.
<u>4.0</u>		SupplementaryData	<SplmtryData>	[0..*]		<u>R5</u>
<u>4.1</u>		PlaceAndName	<PlcAndNm>	[0..1]	Text	
<u>4.2</u>		Envelope	<Envlp>	[1..1]		
<u>4.3</u>		Contents	(User Defined)	[1..1]		

Rules and Guidelines

Rules

R1 Country

The code is checked against the list of country names obtained from the United Nations (ISO 3166, Alpha-2 code).
*This Rule also impacts **PartyIdentification43** Type. Please refer to 'Message Item Types' section p.84 for additional information.*

*This Rule also impacts **BranchAndFinancialInstitutionIdentification5** Type. Please refer to 'Message Item Types' section p.63 for additional information.*

R2 AnyBIC

Only a valid Business identifier code is allowed. Business identifier codes for financial or non-financial institutions are registered by the ISO 9362 Registration Authority in the BIC directory, and consists of eight (8) or eleven (11) contiguous characters comprising the first three or all four of the following components: INSTITUTION CODE, COUNTRY CODE, LOCATION CODE, BRANCH CODE. The institution code, country code and location code are mandatory, while the branch code is optional.

*This Rule also impacts **PartyIdentification43** Type. Please refer to 'Message Item Types' section p.84 for additional information.*

R3 BICFI

Valid BICs for financial institutions are registered by the ISO 9362 Registration Authority in the BIC directory, and consist of eight (8) or eleven (11) contiguous characters comprising the first three or all four of the following components: INSTITUTION CODE, COUNTRY CODE, LOCATION CODE, BRANCH CODE. The institution code, country code and location code are mandatory, while the branch code is optional.

*This Rule also impacts **BranchAndFinancialInstitutionIdentification5** Type. Please refer to 'Message Item Types' section p.63 for additional information.*

R4 IBAN

A valid IBAN consists of all three of the following components: Country Code, check digits and BBAN.

*This Rule also impacts **AccountIdentification4Choice** Type. Please refer to 'Message Item Types' section p.61 for additional information.*

R5 SupplementaryDataRule

This component may not be used without the explicit approval of a SEG and submission to the RA of ISO 20022 compliant structure(s) to be used in the Envelope element.

Message Items Description

The following section identifies the elements of the **IdentificationVerificationReportV02** message definition.

1.0 Assignment <Assgnmt>

Presence: [1..1]

Definition: Identifies the identification assignment.

Type: The **Assignment** block is composed of the following **IdentificationAssignment2** element(s):

Index	Or	Message Item	<XML Tag>	Mult.	Represent./ Type
<u>1.1</u>		MessageIdentification	<MsgId>	[1..1]	Text
<u>1.2</u>		CreationDateTime	<CreDtTm>	[1..1]	DateTime
<u>1.3</u>		Creator	<Cretr>	[0..1]	
<u>1.6</u>		FirstAgent	<FrstAgt>	[0..1]	±
<u>1.7</u>		Assigner	<Assgnr>	[1..1]	
<u>1.10</u>		Assignee	<Assgne>	[1..1]	

1.1 MessageIdentification <MsgId>

Presence: [1..1]

Definition: Point to point reference, as assigned by the assigner, and sent to the next party in the chain to unambiguously identify the message.

Usage: The assigner has to make sure that MessageIdentification is unique per assignee for a pre-agreed period.

Data Type: Max35Text

Format: maxLength: 35
minLength: 1

1.2 CreationDateTime <CreDtTm>

Presence: [1..1]

Definition: Date and time at which the identification assignment was created.

Data Type: ISODateTime

1.3 Creator <Cretr>

Presence: [0..1]

Definition: Party that created the identification assignment.

Type: This message item is composed of one of the following **Party12Choice** element(s):

Index	Or	Message Item	<XML Tag>	Mult.	Represent./ Type
<u>1.4</u>	{Or	Party	<Pty>	[1..1]	±
<u>1.5</u>	Or}	Agent	<Agt>	[1..1]	±

1.4 Party <Pty>

Presence: [1..1]

*This message item is part of choice 1.3 **Creator**.*

Definition: Identification of a person or an organisation.

Type: This message item is composed of the following **PartyIdentification43** element(s):

Or	Message Item	<XML Tag>	Mult.	Represent./ Type
	Name	<Nm>	[0..1]	Text
	PostalAddress	<PstlAdr>	[0..1]	
	Identification	<Id>	[0..1]	
	CountryOfResidence	<CtryOfRes>	[0..1]	Code
	ContactDetails	<CtctDtls>	[0..1]	

For additional Type information, please refer to **PartyIdentification43** p.84 in 'Message Item Types' section.

1.5 Agent <Agt>

Presence: [1..1]

*This message item is part of choice 1.3 **Creator**.*

Definition: Identification of a financial institution.

Type: This message item is composed of the following **BranchAndFinancialInstitutionIdentification5** element(s):

Or	Message Item	<XML Tag>	Mult.	Represent./ Type
	FinancialInstitutionIdentification	<FinInstnId>	[1..1]	
	BranchIdentification	<BrnchId>	[0..1]	

For additional Type information, please refer to **BranchAndFinancialInstitutionIdentification5** p.63 in 'Message Item Types' section.

1.6 FirstAgent <FrstAgt>

Presence: [0..1]

Definition: Identifies the first agent in the identification chain, following the payment initiating party.

Type: This message item is composed of the following **BranchAndFinancialInstitutionIdentification5** element(s):

Or	Message Item	<XML Tag>	Mult.	Represent./ Type
	FinancialInstitutionIdentification	<FinInstnId>	[1..1]	
	BranchIdentification	<BrnchId>	[0..1]	

For additional Type information, please refer to **BranchAndFinancialInstitutionIdentification5** p.63 in 'Message Item Types' section.

1.7 Assigner <Assgnr>

Presence: [1..1]

Definition: Party that assigns the identification assignment to another party. This is also the sender of the message.

Type: This message item is composed of one of the following **Party12Choice** element(s):

Index	Or	Message Item	<XML Tag>	Mult.	Represent./ Type
1.8	{Or	Party	<Pty>	[1..1]	±
1.9	Or}	Agent	<Agt>	[1..1]	±

1.8 Party <Pty>

Presence: [1..1]

This message item is part of choice **1.7 Assigner**.

Definition: Identification of a person or an organisation.

Type: This message item is composed of the following **PartyIdentification43** element(s):

Or	Message Item	<XML Tag>	Mult.	Represent./ Type
	Name	<Nm>	[0..1]	Text
	PostalAddress	<PstlAdr>	[0..1]	
	Identification	<Id>	[0..1]	
	CountryOfResidence	<CtryOfRes>	[0..1]	Code
	ContactDetails	<CtctDtls>	[0..1]	

For additional Type information, please refer to **PartyIdentification43** p.84 in 'Message Item Types' section.

1.9 Agent <Agt>

Presence: [1..1]

This message item is part of choice **1.7 Assigner**.

Definition: Identification of a financial institution.

Type: This message item is composed of the following **BranchAndFinancialInstitutionIdentification5** element(s):

Or	Message Item	<XML Tag>	Mult.	Represent./ Type
	FinancialInstitutionIdentification	<FinInstnId>	[1..1]	
	BranchIdentification	<BrnchId>	[0..1]	

For additional Type information, please refer to **BranchAndFinancialInstitutionIdentification5** p.63 in 'Message Item Types' section.

1.10 Assignee <Assgne>

Presence: [1..1]

Definition: Party that the identification assignment is assigned to. This is also the receiver of the message.

Type: This message item is composed of one of the following **Party12Choice** element(s):

Index	Or	Message Item	<XML Tag>	Mult.	Represent./ Type
<u>1.11</u>	{Or	Party	<Pty>	[1..1]	±
<u>1.12</u>	Or}	Agent	<Agt>	[1..1]	±

1.11 Party <Pty>

Presence: [1..1]

*This message item is part of choice **1.10 Assignee**.*

Definition: Identification of a person or an organisation.

Type: *This message item is composed of the following **PartyIdentification43** element(s):*

Or	Message Item	<XML Tag>	Mult.	Represent./ Type
	Name	<Nm>	[0..1]	Text
	PostalAddress	<PstlAdr>	[0..1]	
	Identification	<Id>	[0..1]	
	CountryOfResidence	<CtryOfRes>	[0..1]	Code
	ContactDetails	<CtctDtls>	[0..1]	

*For additional Type information, please refer to **PartyIdentification43** p.84 in 'Message Item Types' section.*

1.12 Agent <Agt>

Presence: [1..1]

*This message item is part of choice **1.10 Assignee**.*

Definition: Identification of a financial institution.

Type: *This message item is composed of the following **BranchAndFinancialInstitutionIdentification5** element(s):*

Or	Message Item	<XML Tag>	Mult.	Represent./ Type
	FinancialInstitutionIdentification	<FinInstnId>	[1..1]	
	BranchIdentification	<BrnchId>	[0..1]	

*For additional Type information, please refer to **BranchAndFinancialInstitutionIdentification5** p.63 in 'Message Item Types' section.*

2.0 OriginalAssignment <OrgnlAssgnmt>

Presence: [0..1]

Definition: Provides for the reference to the original identification assignment.

Type: *The **OriginalAssignment** block is composed of the following **MessageIdentification5** element(s):*

Index	Or	Message Item	<XML Tag>	Mult.	Represent./ Type
<u>2.1</u>		MessageIdentification	<MsgId>	[0..1]	Text
<u>2.2</u>		CreationDateTime	<CreDtTm>	[0..1]	DateTime

Index	Or	Message Item	<XML Tag>	Mult.	Represent./ Type
<u>2.3</u>		FirstAgent	<FrstAgt>	[0..1]	±

2.1 MessageIdentification <MsgId>

Presence: [0..1]

Definition: Point to point reference, as assigned by the assigner, and sent to the next party in the chain to unambiguously identify the message.

Usage: The assigner has to make sure that MessageIdentification is unique per assignee for a pre-agreed period.

Data Type: Max35Text

Format: maxLength: 35
minLength: 1

2.2 CreationDateTime <CreDtTm>

Presence: [0..1]

Definition: Date and time at which the message was created.

Data Type: ISODatetime

2.3 FirstAgent <FrstAgt>

Presence: [0..1]

Definition: Identifies the first agent in the identification chain, following the payment initiating party.

Type: This message item is composed of the following *BranchAndFinancialInstitutionIdentification5* element(s):

Or	Message Item	<XML Tag>	Mult.	Represent./ Type
	FinancialInstitutionIdentification	<FinInstnId>	[1..1]	
	BranchIdentification	<BrnchId>	[0..1]	

For additional Type information, please refer to *BranchAndFinancialInstitutionIdentification5* p.63 in 'Message Item Types' section.

3.0 Report <Rpt>

Presence: [1..*]

Definition: Information concerning the verification of the identification data for which verification was requested.

Type: The *Report* block is composed of the following *VerificationReport2* element(s):

Index	Or	Message Item	<XML Tag>	Mult.	Represent./ Type
<u>3.1</u>		OriginalIdentification	<OrgnlId>	[1..1]	Text
<u>3.2</u>		Verification	<Vrfctn>	[1..1]	Indicator
<u>3.3</u>		Reason	<Rsn>	[0..1]	
<u>3.6</u>		OriginalPartyAndAccountIdentification	<OrgnlPtyAndAcctId>	[0..1]	

Index	Or	Message Item	<XML Tag>	Mult.	Represent./ Type
<u>3.10</u>		UpdatedPartyAndAccountIdentification	<UpdtdPtyAndAcctId>	[0..1]	

3.1 OriginalIdentification <Orgnld>

Presence: [1..1]

Definition: Unique identification, as assigned by a sending party, to unambiguously identify the party and account identification information group within the original message.

Data Type: Max35Text

Format: maxLength: 35
minLength: 1

3.2 Verification <Vrfctn>

Presence: [1..1]

Definition: Identifies whether the party and/or account information received is correct.

Data Type: *One of the following **IdentificationVerificationIndicator** values must be used:*

MeaningWhenTrue: Indicates that the identification information received is correct.

MeaningWhenFalse: Indicates that the identification information received is incorrect.

3.3 Reason <Rsn>

Presence: [0..1]

Definition: Specifies the reason why the verified identification information is incorrect.

Type: *This message item is composed of one of the following **VerificationReason1Choice** element(s):*

Index	Or	Message Item	<XML Tag>	Mult.	Represent./ Type
<u>3.4</u>	{Or	Code	<Cd>	[1..1]	Text
<u>3.5</u>	Or}	Proprietary	<Prtry>	[1..1]	Text

3.4 Code <Cd>

Presence: [1..1]

*This message item is part of choice 3.3 **Reason**.*

Definition: Reason why the verified identification information is incorrect, as published in an external reason code list.

Data Type: ExternalVerificationReason1Code

Format: maxLength: 4
minLength: 1

3.5 Proprietary <Prtry>

Presence: [1..1]

*This message item is part of choice 3.3 **Reason**.*

Definition: Reason why the verified identification information is incorrect, in a proprietary form.

Data Type: Max35Text

Format: maxLength: 35
minLength: 1

3.6 OriginalPartyAndAccountIdentification <OrgnPtyAndAcctId>

Presence: [0..1]

Definition: Provides party and/or account identification information as given in the original message.

Type: This message item is composed of the following *IdentificationInformation2* element(s):

Index	Or	Message Item	<XML Tag>	Mult.	Represent./ Type
<u>3.7</u>		Party	<Pty>	[0..1]	±
<u>3.8</u>		Account	<Acct>	[0..1]	±
<u>3.9</u>		Agent	<Agt>	[0..1]	±

3.7 Party <Pty>

Presence: [0..1]

Definition: Account owner that owes an amount of money or to whom an amount of money is due.

Type: This message item is composed of the following *PartyIdentification43* element(s):

Or	Message Item	<XML Tag>	Mult.	Represent./ Type
	Name	<Nm>	[0..1]	Text
	PostalAddress	<PstlAdr>	[0..1]	
	Identification	<Id>	[0..1]	
	CountryOfResidence	<CtryOfRes>	[0..1]	Code
	ContactDetails	<CtctDtls>	[0..1]	

For additional Type information, please refer to *PartyIdentification43* p.84 in 'Message Item Types' section.

3.8 Account <Acct>

Presence: [0..1]

Definition: Unambiguous identification of the account of a party.

Type: This message item is composed of one of the following *AccountIdentification4Choice* element(s):

Or	Message Item	<XML Tag>	Mult.	Represent./ Type
{Or	IBAN	<IBAN>	[1..1]	Identifier
Or}	Other	<Othr>	[1..1]	

For additional Type information, please refer to *AccountIdentification4Choice* p.61 in 'Message Item Types' section.

3.9 Agent <Agt>

Presence: [0..1]

Definition: Financial institution servicing an account for a party.

Type: This message item is composed of the following *BranchAndFinancialInstitutionIdentification5* element(s):

Or	Message Item	<XML Tag>	Mult.	Represent./ Type
	FinancialInstitutionIdentification	<FinInstnId>	[1..1]	
	BranchIdentification	<BrnchId>	[0..1]	

For additional Type information, please refer to **BranchAndFinancialInstitutionIdentification5** p.63 in 'Message Item Types' section.

3.10 UpdatedPartyAndAccountIdentification <UpdtdPtyAndAcctId>

Presence: [0..1]

Definition: Provides party and/or account identification information.

Type: This message item is composed of the following **IdentificationInformation2** element(s):

Index	Or	Message Item	<XML Tag>	Mult.	Represent./ Type
<u>3.11</u>		Party	<Pty>	[0..1]	±
<u>3.12</u>		Account	<Acct>	[0..1]	±
<u>3.13</u>		Agent	<Agt>	[0..1]	±

3.11 Party <Pty>

Presence: [0..1]

Definition: Account owner that owes an amount of money or to whom an amount of money is due.

Type: This message item is composed of the following **PartyIdentification43** element(s):

Or	Message Item	<XML Tag>	Mult.	Represent./ Type
	Name	<Nm>	[0..1]	Text
	PostalAddress	<PstlAdr>	[0..1]	
	Identification	<Id>	[0..1]	
	CountryOfResidence	<CtryOfRes>	[0..1]	Code
	ContactDetails	<CtctDtls>	[0..1]	

For additional Type information, please refer to **PartyIdentification43** p.84 in 'Message Item Types' section.

3.12 Account <Acct>

Presence: [0..1]

Definition: Unambiguous identification of the account of a party.

Type: This message item is composed of one of the following **AccountIdentification4Choice** element(s):

Or	Message Item	<XML Tag>	Mult.	Represent./ Type
{Or	IBAN	<IBAN>	[1..1]	Identifier
Or}	Other	<Othr>	[1..1]	

For additional Type information, please refer to AccountIdentification4Choice p.61 in 'Message Item Types' section.

3.13 Agent <Agt>

Presence: [0..1]

Definition: Financial institution servicing an account for a party.

Type: This message item is composed of the following BranchAndFinancialInstitutionIdentification5 element(s):

Or	Message Item	<XML Tag>	Mult.	Represent./ Type
	FinancialInstitutionIdentification	<FinInstnId>	[1..1]	
	BranchIdentification	<BrnchId>	[0..1]	

For additional Type information, please refer to BranchAndFinancialInstitutionIdentification5 p.63 in 'Message Item Types' section.

4.0 SupplementaryData <SplmtryData>

Presence: [0..*]

Impacted by: R5

Definition: Additional information that cannot be captured in the structured elements and/or any other specific block.

Type: The SupplementaryData block is composed of the following SupplementaryData1 element(s):

Index	Or	Message Item	<XML Tag>	Mult.	Represent./ Type
4.1		PlaceAndName	<PlcAndNm>	[0..1]	Text
4.2		Envelope	<Envlp>	[1..1]	

Rule(s): SupplementaryDataRule

This component may not be used without the explicit approval of a SEG and submission to the RA of ISO 20022 compliant structure(s) to be used in the Envelope element.

4.1 PlaceAndName <PlcAndNm>

Presence: [0..1]

Definition: Unambiguous reference to the location where the supplementary data must be inserted in the message instance.

In the case of XML, this is expressed by a valid XPath.

Data Type: Max350Text

Format: maxLength: 350

minLength: 1

4.2 Envelope <Envlp>

Presence: [1..1]

Definition: Technical element wrapping the supplementary data.

Type: This message item is composed of the following SupplementaryDataEnvelope1 element(s):

Index	Or	Message Item	<XML Tag>	Mult.	Represent./ Type
4.3		Contents	(User Defined)	[1..1]	

4.3 Contents (User Defined)

Presence: [1..1]

Definition: Technical element that specifies the supplementary data.

Type: (User Defined)

This content will be validated on a can do basis.

It may contain any XML structure.

Business Example 1

Narrative

Bank CCCCFRIT has received an IdentificationVerificationRequest from its customer Corporate Actions Inc., requesting the verification of the account number of customer Jones. Bank CCCCFRIT has verified the presented account identification information and has concluded that the information is correct. Bank CCCCFRIT sends an IdentificationVerificationReport message as confirmation back to customer Corporate Actions Inc.

Business Description

IdentificationVerificationReport message from bank CCCCFRIT to customer Corporate Actions Inc.:

Element	<XMLTag>	Content
Assignment	<Assgnmt>	
MessageIdentification	<MsgId>	CCCC-56445/32
CreationDateTime	<CredDtTm>	2012-04-08T08:00:00
Assigner	<Assgnr>	
Agent	<Agt>	
FinancialInstitutionIdentification	<FinInstnId>	
BICFI	<BICFI>	CCCCFRIT
Assignee	<Assgne>	
Party	<Pty>	
Name	<Nm>	Corporate Actions Inc.
OriginalAssignment	<OrgnlAssgnmt>	
MessageIdentification	<MsgId>	CA-0023896
CreationDateTime	<CredDtTm>	2012-04-07T11:30:00
Report	<Rpt>	
OriginalIdentification	<OrgnlId>	VER-12365
Verification	<Vrctn>	TRUE

XML Instance

```

<IdVrctnRpt>
  <Assgnmt>
    <MsgId>CCCC-56445/32</MsgId>
    <CreDtTm>2012-04-08T08:00:00</CreDtTm>
    <Assgnr>
      <Agt>
        <FinInstnId>
          <BICFI>CCCCFRTT</BICFI>
        </FinInstnId>
      </Agt>
    </Assgnr>
    <Assgne>
      <Pty>
        <Nm>Corporate Actions Inc.</Nm>
      </Pty>
    </Assgne>
  </Assgnmt>
  <OrgnlAssgnmt>
    <MsgId>CA-0023896</MsgId>
    <CreDtTm>2012-04-07T11:30:00</CreDtTm>
  </OrgnlAssgnmt>
  <Rpt>
    <OrgnlId>VER-12365</OrgnlId>
    <Vrctn>true</Vrctn>
  </Rpt>
</IdVrctnRpt>

```

Business Example 2

Narrative

Bank FFFFDECC has received an IdentificationVerificationRequest from bank BBBBDEFF, requesting the verification of account identification information. Bank FFFFDECC has verified the presented account identification information and has concluded that the information is incorrect. Due to a merger bank FFFFDECC has changed the structures of its bank account numbers. Bank FFFFDECC sends an IdentificationVerificationReport message as confirmation back to bank BBBBDEFF.

Business Description

IdentificationVerificationReport from bank FFFFDECC to bank BBBBDEFF:

<i>Element</i>	<i><XMLTag></i>	<i>Content</i>
Assignment	<Assgnmt>	
MessageIdentification	<MsgId>	FFFF-334AB/0023
CreationDateTime	<CredDtTm>	2012-04-09T10:20:00
Assigner	<Assgnr>	
Agent	<Agt>	
FinancialInstitutionIdentification	<FinInstnId>	

BICFI	<BICFI>	FFFFDECC
Assignee	<Assgne>	
Agent	<Agt>	
FinancialInstitutionIdentification	<FinInstnId>	
BICFI	<BICFI>	BBBBDEFF
OriginalAssignment	<OrgnlAssgnmt>	
MessageIdentification	<MsgId>	BBBB-56812/559
CreationDateTime	<CredDtTm>	2012-04-08T16:30:00
Report	<Rpt>	
OriginalIdentification	<OrgnlId>	BBBBVER/2659-cust569887
Verification	<Vrctn>	FALSE
Reason	<Rsn>	
Proprietary	<Prtry>	structure changed due to merger
OriginalPartyAndAccountIdentification	<OrgnlPtyAndAcctId>	
Account	<Acct>	
IBAN	<IBAN>	DE00000006789123456789
Agent	<Agt>	
FinancialInstitutionIdentification	<FinInstnId>	
Name	<Nm>	Best Bank
UpdatedPartyAndAccountIdentification	<UpdtdPtyAndAcctId>	
Account	<Acct>	
IBAN	<IBAN>	DE00012346789123456789
Agent	<Agt>	
FinancialInstitutionIdentification	<FinInstnId>	
Name	<Nm>	Best Bank

XML Instance

```

<IdVrctnRpt>
  <Assgnmt>
    <MsgId>FFFF-334AB/0023</MsgId>
    <CreDtTm>2012-04-09T10:20:00</CreDtTm>
    <Assgnr>
      <Agt>
        <FinInstnId>
          <BICFI>FFFFDECC</BICFI>
        </FinInstnId>
      </Agt>
    </Assgnr>
  <Assgne>
    <Agt>

```

```
        <FinInstnId>
          <BICFI>BBBBDEFF</BICFI>
        </FinInstnId>
      </Agt>
    </Assgne>
  </Assgnmt>
</OrgnlAssgnmt>
  <MsgId>BBBB-56812/559</MsgId>
  <CreDtTm>2012-04-08T16:30:00</CreDtTm>
</OrgnlAssgnmt>
<Rpt>
  <OrgnlId>BBBBVER/2659-cust56988</OrgnlId>
  <Vrctn>false</Vrctn>
  <Rsn>
    <Prtry>structure change due to merger</Prtry>
  </Rsn>
  <OrgnlPtyAndAcctId>
    <Acct>
      <IBAN>DE00000006789123456789</IBAN>
    </Acct>
    <Agt>
      <FinInstnId>
        <Nm>Best Bank</Nm>
      </FinInstnId>
    </Agt>
  </OrgnlPtyAndAcctId>
  <UpdtdPtyAndAcctId>
    <Acct>
      <IBAN>DE00012346789123456789</IBAN>
    </Acct>
    <Agt>
      <FinInstnId>
        <Nm>Best Bank</Nm>
      </FinInstnId>
    </Agt>
  </UpdtdPtyAndAcctId>
</Rpt>
</IdVrctnRpt>
```


Message Item Types

Data Types

Data Types Index

1 Amount

- [1.1 CurrencyAndAmount](#)
- [1.2 ImpliedCurrencyAndAmount](#)

2 Date Time

- [2.1 ISODate](#)
- [2.2 ISODateTime](#)

3 Identifier

- [3.1 AnyBICIdentifier](#)
- [3.2 AustrianBankleitzahlIdentifier](#)
- [3.3 BBANIdentifier](#)
- [3.4 BICFIIdentifier](#)
- [3.5 BICNonFIIdentifier](#)
- [3.6 BelgianIdentifier](#)
- [3.7 BloombergIdentifier](#)
- [3.8 CHIPSParticipantIdentifier](#)
- [3.9 CHIPSUniversalIdentifier](#)
- [3.10 CUSIPIdentifier](#)
- [3.11 CanadianPaymentsARNIdentifier](#)
- [3.12 ConsolidatedTapeAssociationIdentifier](#)
- [3.13 CountryCode](#)
- [3.14 CurrencyCode](#)
- [3.15 DunsIdentifier](#)
- [3.16 DutchIdentifier](#)
- [3.17 EANGLNIdentifier](#)
- [3.18 EuroclearClearstreamIdentifier](#)
- [3.19 ExternalAccountIdentification1Code](#)
- [3.20 ExternalClearingSystemIdentification1Code](#)
- [3.21 ExternalFinancialInstitutionIdentification1Code](#)
- [3.22 ExternalOrganisationIdentification1Code](#)
- [3.23 ExternalPersonIdentification1Code](#)
- [3.24 FedwireRoutingNumberIdentifier](#)
- [3.25 GermanBankleitzahlIdentifier](#)
- [3.26 HellenicBankIdentificationCodeIdentifier](#)
- [3.27 HongKongBankIdentifier](#)
- [3.28 IBAN2007Identifier](#)
- [3.29 ISINIdentifier](#)
- [3.30 IndianFinancialSystemCodeIdentifier](#)
- [3.31 IrishNSCIdentifier](#)
- [3.32 ItalianDomesticIdentifier](#)
- [3.33 LanguageCode](#)
- [3.34 MICIdentifier](#)
- [3.35 NewZealandNCCIdentifier](#)

[3.36 PolishNationalClearingCodeIdentifier](#)
[3.37 PortugueseNCCIdentifier](#)
[3.38 QUICKIdentifier](#)
[3.39 RICIdentifier](#)
[3.40 RussianCentralBankIdentificationCodeIdentifier](#)
[3.41 SEDOLIdentifier](#)
[3.42 SicovamIdentifier](#)
[3.43 SouthAfricanNCCIdentifier](#)
[3.44 SpanishDomesticInterbankingIdentifier](#)
[3.45 SwissBCIdentifier](#)
[3.46 SwissSICIdentifier](#)
[3.47 TickerIdentifier](#)
[3.48 UKDomesticSortCodeIdentifier](#)
[3.49 UPICIdentifier](#)
[3.50 ValorenIdentifier](#)
[3.51 WertpapierIdentifier](#)

4 Text

[4.1 ExternalVerificationReason1Code](#)
[4.2 Max140Text](#)
[4.3 Max15NumericText](#)
[4.4 Max16Text](#)
[4.5 Max2048Text](#)
[4.6 Max256Text](#)
[4.7 Max34Text](#)
[4.8 Max350Text](#)
[4.9 Max35Text](#)
[4.10 Max70Text](#)
[4.11 PhoneNumber](#)

Data Types Description

1 Amount

1.1 CurrencyAndAmount

Definition:	Number of monetary units specified in a currency, where the unit of currency is explicit and compliant with ISO 4217. The decimal separator is a dot. Note: A zero amount is considered a positive amount.
XML Attribute:	Currency (Ccy). <i>This XML Attribute is typed by CurrencyCode.</i>
Format:	CurrencyAndAmount fractionDigits: 5 minInclusive: 0 totalDigits: 18 CurrencyCode [A-Z]{3,3}
Rule(s):	CurrencyCode ValidationByTable
Example:	100000 (Ccy='EUR')

1.2 ImpliedCurrencyAndAmount

Definition:	Number of monetary units specified in a currency where the unit of currency is implied by the context and compliant with ISO 4217. The decimal separator is a dot. Note: a zero amount is considered a positive amount.
Format:	fractionDigits: 5 minInclusive: 0 totalDigits: 18
Example:	500000

2 Date Time

2.1 ISODate

Definition:	A particular point in the progression of time in a calendar year expressed in the YYYY-MM-DD format. This representation is defined in "XML Schema Part 2: Datatypes Second Edition - W3C Recommendation 28 October 2004" which is aligned with ISO 8601.
Example:	2002-02-25

2.2 ISODateTime

Definition:	A particular point in the progression of time defined by a mandatory date and a mandatory time component, expressed in either UTC time format (YYYY-MM-DDThh:mm:ss.sssZ), local time with UTC offset format (YYYY-MM-DDThh:mm:ss.sss +/-hh:mm), or local time format (YYYY-MM-DDThh:mm:ss.sss). These representations are defined in "XML Schema Part 2: Datatypes Second Edition - W3C Recommendation 28 October 2004" which is aligned with ISO 8601. Note on the time format: 1) beginning / end of calendar day 00:00:00 = the beginning of a calendar day 24:00:00 = the end of a calendar day 2) fractions of second in time format Decimal fractions of seconds may be included. In this case, the involved parties shall agree on the maximum number of digits that are allowed.
Example:	2002-07-21T08:35:30

3 Identifier

3.1 AnyBICIdentifier

Definition:	Code allocated to a financial or non-financial institution by the ISO 9362 Registration Authority, as described in ISO 9362 "Banking - Banking telecommunication messages - Business identifier code (BIC)".
Format:	[A-Z]{6,6}[A-Z2-9][A-NP-Z0-9]([A-Z0-9]{3,3}){0,1}

Rule(s):	AnyBIC Only a valid Business identifier code is allowed. Business identifier codes for financial or non-financial institutions are registered by the ISO 9362 Registration Authority in the BIC directory, and consists of eight (8) or eleven (11) contiguous characters comprising the first three or all four of the following components: INSTITUTION CODE, COUNTRY CODE, LOCATION CODE, BRANCH CODE. The institution code, country code and location code are mandatory, while the branch code is optional.
Example:	CHASUS33

3.2 AustrianBankleitzahlIdentifier

Definition:	Austrian Bankleitzahl. Identifies Austrian financial institutions on the Austrian national clearing system.
Format:	AT[0-9]{5,5}
Example:	AT12345

3.3 BBANIdentifier

Definition:	Basic Bank Account Number (BBAN). Identifier used nationally by financial institutions, ie, in individual countries, generally as part of a National Account Numbering Scheme(s), which uniquely identifies the account of a customer.
Format:	[a-zA-Z0-9]{1,30}
Example:	BARC12345612345678

3.4 BICFIIdentifier

Definition:	Code allocated to a financial institution by the ISO 9362 Registration Authority as described in ISO 9362 "Banking - Banking telecommunication messages - Business identifier code (BIC)".
Format:	[A-Z]{6,6}[A-Z2-9][A-NP-Z0-9]([A-Z0-9]{3,3}){0,1}
Rule(s):	BICFI Valid BICs for financial institutions are registered by the ISO 9362 Registration Authority in the BIC directory, and consist of eight (8) or eleven (11) contiguous characters comprising the first three or all four of the following components: INSTITUTION CODE, COUNTRY CODE, LOCATION CODE, BRANCH CODE. The institution code, country code and location code are mandatory, while the branch code is optional.
Example:	CHASUS33

3.5 BICNonFIIdentifier

Definition:	Code allocated to a non-financial institution by the ISO 9362 Registration Authority as described in ISO 9362 "Banking - Banking telecommunication messages - Business identifier code (BIC)".
Format:	[A-Z]{6,6}[A-Z2-9][A-NP-Z0-9]([A-Z0-9]{3,3}){0,1}

Rule(s):	BICNonFI Valid BICs for non-financial institutions are registered by the ISO 9362 Registration Authority in the BIC directory, and consist of eight (8) or eleven (11) contiguous characters comprising the first three or all four of the following components: INSTITUTION CODE, COUNTRY CODE, LOCATION CODE, BRANCH CODE. The institution code, country code and location code are mandatory, while the branch code is optional.
Example:	USINFRPP

3.6 BelgianIdentifier

Definition:	Identifier for Belgian securities.
Example:	359203

3.7 BloombergIdentifier

Definition:	An identifier of a security assigned by the Bloomberg organisation.
Format:	maxLength: 35 minLength: 1
Example:	GGF.FP

3.8 CHIPSParticipantIdentifier

Definition:	(United States) Clearing House Interbank Payment System (CHIPS) Participant Identifier (ID). Identifies financial institutions participating on CHIPS. The CHIPS Participant ID is assigned by the New York Clearing House.
Format:	CP[0-9]{4,4}
Example:	CP1234

3.9 CHIPSUniversalIdentifier

Definition:	(United States) Clearing House Interbank Payments System (CHIPS) Universal Identification (UID). Identifies entities that own accounts at CHIPS participating financial institutions, through which CHIPS payments are effected. The CHIPS UID is assigned by the New York Clearing House.
Format:	CH[0-9]{6,6}
Example:	CH123456

3.10 CUSIPIdentifier

Definition:	Committee on Uniform Securities and Identification Procedures (CUSIP). The standards body that created and maintains the securities classification system in the US. Non-US securities have a similar number called the CINS number.
Example:	3134A33L8

3.11 CanadianPaymentsARNIdentifier

Definition:	Canadian Payments Association Routing Number. Identifies Canadian financial institutions on the Canadian national clearing system.
Format:	CA[0-9]{9,9}

Example:	CA123456789
-----------------	-------------

3.12 ConsolidatedTapeAssociationIdentifier

Definition:	Identifier of a security assigned by the Consolidated Tape Association.
Format:	maxLength: 35 minLength: 1
Example:	483894

3.13 CountryCode

Definition:	Code to identify a country, a dependency, or another area of particular geopolitical interest, on the basis of country names obtained from the United Nations (ISO 3166, Alpha-2 code).
Format:	[A-Z]{2,2}
Rule(s):	Country The code is checked against the list of country names obtained from the United Nations (ISO 3166, Alpha-2 code).
Example:	BE

3.14 CurrencyCode

Definition:	Code allocated to a currency, by a maintenance agency, under an international identification scheme as described in the latest edition of the international standard ISO 4217 "Codes for the representation of currencies and funds". Valid currency codes are registered with the ISO 4217 Maintenance Agency, and consist of three contiguous letters.
Format:	[A-Z]{3,3}
Rule(s):	ValidationByTable
Example:	AWG

3.15 DunsIdentifier

Definition:	Data Universal Numbering System. A unique identification number provided by Dun & Bradstreet to identify an organization.
Format:	[0-9]{9,9}
Example:	578942538

3.16 DutchIdentifier

Definition:	Identifier for Dutch securities.
Example:	234123

3.17 EANGLNIdentifier

Definition:	Global Location Number. A non-significant reference number used to identify legal entities, functional entities or physical entities according to the European Association for Numbering (EAN) numbering scheme rules. The number is used to retrieve the detailed information linked to it.
--------------------	--

Format:	[0-9]{13,13}
Example:	7265658971233

3.18 EuroclearClearstreamIdentifier

Definition:	Identifier of securities issued in Luxembourg. The common code is a 9-digit code that replaces the CEDEL (Clearstream) and Euroclear codes.
Format:	maxLength: 12 minLength: 1
Example:	12197

3.19 ExternalAccountIdentification1Code

Definition:	Specifies the external account identification scheme name code in the format of character string with a maximum length of 4 characters. The list of valid codes is an external code list published separately.
Format:	maxLength: 4 minLength: 1
Example:	BBAN

3.20 ExternalClearingSystemIdentification1Code

Definition:	Specifies the clearing system identification code, as published in an external clearing system identification code list.
Format:	maxLength: 5 minLength: 1
Example:	AUBSB

3.21 ExternalFinancialInstitutionIdentification1Code

Definition:	Specifies the external financial institution identification scheme name code in the format of character string with a maximum length of 4 characters. The list of valid codes is an external code list published separately.
Format:	maxLength: 4 minLength: 1
Example:	EXC1

3.22 ExternalOrganisationIdentification1Code

Definition:	Specifies the external organisation identification scheme name code in the format of character string with a maximum length of 4 characters. The list of valid codes is an external code list published separately.
Format:	maxLength: 4 minLength: 1
Example:	CUST

3.23 ExternalPersonIdentification1Code

Definition:	Specifies the external person identification scheme name code in the format of character string with a maximum length of 4 characters. The list of valid codes is an external code list published separately.
Format:	maxLength: 4 minLength: 1
Example:	ARNU

3.24 FedwireRoutingNumberIdentifier

Definition:	Fedwire Routing Number. Identifies financial institutions, in the US, on the FedWire system. The routing number is assigned by the American Bankers Association (ABA).
Format:	FW[0-9]{9,9}
Example:	FW123456789

3.25 GermanBankleitzahlIdentifier

Definition:	German Bankleitzahl. Identifies German financial institutions on the German national clearing systems.
Format:	BL[0-9]{8,8}
Example:	BL12345678

3.26 HellenicBankIdentificationCodeIdentifier

Definition:	Hellenic Bank Identification Code Identifier. Identifies Greek financial institutions on the greek national clearing system.
Format:	GR[0-9]{7,7}
Example:	GR1234567

3.27 HongKongBankIdentifier

Definition:	Hong Kong Bank Code. Identifies Hong Kong financial institutions on the Hong Kong local clearing system.
Format:	HK[0-9]{3,3}
Example:	HK123

3.28 IBAN2007Identifier

Definition:	An identifier used internationally by financial institutions to uniquely identify the account of a customer at a financial institution, as described in the latest edition of the international standard ISO 13616:2007 - "Banking and related financial services - International Bank Account Number (IBAN)".
Format:	[A-Z]{2,2}[0-9]{2,2}[a-zA-Z0-9]{1,30}
Rule(s):	IBAN A valid IBAN consists of all three of the following components: Country Code, check digits and BBAN.
Example:	AT611904300234573201

3.29 ISINIdentifier

Definition:	International Securities Identification Number (ISIN). A numbering system designed by the United Nation's International Organisation for Standardisation (ISO). The ISIN is composed of a 2-character prefix representing the country of issue, followed by the national security number (if one exists), and a check digit. Each country has a national numbering agency that assigns ISIN numbers for securities in that country.
Format:	[A-Z0-9]{12,12}
Example:	US3134A33L82

3.30 IndianFinancialSystemCodeIdentifier

Definition:	Indian Financial System Code Identifier. Identifies Indian financial institutions on the Indian national clearing system.
Format:	IN[a-zA-Z0-9]{11,11}
Example:	IN12azBX12345

3.31 IrishNSCIdentifier

Definition:	Irish National Sorting Code. Identifies Irish financial institutions on the Irish national clearing system.
Format:	IE[0-9]{6,6}
Example:	IE123456

3.32 ItalianDomesticIdentifier

Definition:	Italian Domestic Identification Code. Identifies Italian financial institutions on the Italian national clearing system. The code is assigned by the Associazione Bancaria Italiana (ABI).
Format:	IT[0-9]{10,10}
Example:	IT1234567890

3.33 LanguageCode

Definition:	Specifies a language.
Rule(s):	ValidationByTable
Example:	ENG

3.34 MICIdentifier

Definition:	Market Identifier Code. The identification of a financial market, as stipulated in the norm ISO 10383 'Codes for exchanges and market identifications'.
Format:	[A-Z0-9]{4,4}
Example:	XTKS

3.35 NewZealandNCCIdentifier

Definition:	New Zealand Bank/Branch Code. Identifies New Zealand institutions on the New Zealand national clearing system. The code is assigned by the New Zealand Bankers' Association (NZBA).
Format:	NZ[0-9]{6,6}
Example:	NZ123456

3.36 PolishNationalClearingCodeIdentifier

Definition:	Polish National Clearing Code Identifier. Identifies Polish financial institutions on the Polish national clearing system.
Format:	PL[0-9]{8,8}
Example:	PL12345678

3.37 PortugueseNCCIdentifier

Definition:	Portuguese National Clearing Code. Identifies Portuguese financial institutions on the Portuguese national clearing system.
Format:	PT[0-9]{8,8}
Example:	PT12345678

3.38 QUICKIdentifier

Definition:	Identifier of a security assigned by the Japanese QUICK identification scheme for financial instruments.
Example:	97334

3.39 RICIdentifier

Definition:	Reuters Identification Code (RIC). A numbering system used within the Reuters system to identify instruments worldwide. The RIC contains an X-character market specific code (can be the CUSIP or EPIC codes) followed by a full stop, then the two-digit ISO country code, eg, IBM in UK is IBM.UK.
Format:	maxLength: 35 minLength: 1
Example:	TDVd.CR

3.40 RussianCentralBankIdentificationCodeIdentifier

Definition:	Russian Central Bank Identification Code. Identifies Russian financial institutions on the Russian national clearing system.
Format:	RU[0-9]{9,9}
Example:	RU123456789

3.41 SEDOLIdentifier

Definition:	Stock Exchange Daily Official List (SEDOL) number. A code used by the London Stock Exchange to identify foreign stocks, especially those that aren't actively traded in the US and don't have a CUSIP number.
Example:	5719210

3.42 SicovamIdentifier

Definition:	Identifier for French securities assigned by the Societe Interprofessionnelle Pour La Compensation des Valeurs Mobilières in France. The Sicovam is composed of 5-digits.
Example:	12777

3.43 SouthAfricanNCCIdentifier

Definition:	South African National Clearing Code (NCC). Identifies South African financial institutions on the South African national clearing system. The code is assigned by the South African Bankers Services Company Ltd. (BankServ).
Format:	ZA[0-9]{6,6}
Example:	ZA123456

3.44 SpanishDomesticInterbankingIdentifier

Definition:	Spanish Domestic Interbanking Code. Identifies Spanish financial institutions on the Spanish national clearing system. The code is assigned by the Centro de Cooperacion Interbancaria (CCI).
Format:	ES[0-9]{8,9}
Example:	ES12345678

3.45 SwissBCIdentifier

Definition:	Swiss Bank Code. Identifies Swiss institutions on the Swiss national clearing system.
Format:	SW[0-9]{3,5}
Example:	SW123

3.46 SwissSICIdentifier

Definition:	Swiss Interbank Clearing (SIC) Code. Identifies Swiss financial institutions domestically, on the Swiss national clearing system.
Format:	SW[0-9]{6,6}
Example:	SW123456

3.47 TickerIdentifier

Definition:	Letters that identify a stock traded on a stock exchange. The Ticker Symbol is a short and convenient way of identifying a stock, eg, RTR.L for Reuters quoted in London.
Format:	maxLength: 35 minLength: 1
Example:	SOL

3.48 UKDomesticSortCodeIdentifier

Definition:	United Kingdom (UK) Sort Code. Identifies British financial institutions on the British national clearing systems. The sort code is assigned by the Association for Payments and Clearing Services (APACS).
Format:	SC[0-9]{6,6}
Example:	SC123456

3.49 UPICIdentifier

Definition:	Universal Payment Identification Code (UPIC). Identifier used by the New York Clearing House to mask confidential data, such as bank accounts and bank routing numbers. UPIC numbers remain with business customers, regardless of banking relationship changes.
Format:	[0-9]{8,17}
Example:	12345678

3.50 ValorenIdentifier

Definition:	Identifier for Swiss securities assigned by Telekurs Financial, the Swiss numbering agency.
Example:	832614

3.51 WertpapierIdentifier

Definition:	Wertpapier Kenn-nummer. A number issued in Germany by the Wertpapier Mitteilungen. The Wertpapier Kenn-nummer, sometimes called WPK, contains 6-digits, but no check digit. There are different ranges of numbers representing different classes of securities.
Example:	911958

4 Text

4.1 ExternalVerificationReason1Code

Definition:	Specifies the external verification reason code in the format of character string with a maximum length of 4 characters. The list of valid codes is an external code list published separately.
Format:	maxLength: 4 minLength: 1
Example:	AAAA

4.2 Max140Text

Definition:	Specifies a character string with a maximum length of 140 characters.
Format:	maxLength: 140 minLength: 1

4.3 Max15NumericText

4.4 Max16Text

4.5 Max2048Text

4.6 Max256Text

4.7 Max34Text

4.8 Max350Text

Page 59

Example:	1234567890123456789012345678901234567890123456789012345678901234 34567890123456789012345678901234567890123456789012345678901234 56789012345678901234567890123456789012345678901234567890123456 78901234567890123456789012345678901234567890123456789012345678 90123456789012345678901234567890123456789012345678901234567890
-----------------	--

4.9 Max35Text

Definition:	Specifies a character string with a maximum length of 35 characters.
Format:	maxLength: 35 minLength: 1
Example:	ABCDEFGHJKLMNOPQRST123456789012345

4.10 Max70Text

Definition:	Specifies a character string with a maximum length of 70characters.
Format:	maxLength: 70 minLength: 1
Example:	A string value of maximum 70 characters.

4.11 PhoneNumber

Definition:	The collection of information which identifies a specific phone or FAX number as defined by telecom services. It consists of a "+" followed by the country code (from 1 to 3 characters) then a "-" and finally, any combination of numbers, "(", ")", "+ and "-" (up to 30 characters).
Format:	\+[0-9]{1,3}-[0-9()+\-]{1,30}
Example:	+1-(465)432-123

End Points

End Points Index

1 Account identification

1.1 AccountIdentification4Choice

2 Financial institution identification

2.1 BranchAndFinancialInstitutionIdentification5

3 Miscellaneous

3.1 OriginalTransactionReference18

4 Organisation identification

4.1 PartyIdentification43

End Points Description

1 Account identification

1.1 AccountIdentification4Choice

AccountIdentification4Choice is used in message definition *IdentificationModificationAdviceV02* p.6, p.6, message definition *IdentificationVerificationReportV02* p.32, p.32, message definition *IdentificationVerificationRequestV02* p.20.

Definition: Specifies the unique identification of an account as assigned by the account servicer.

Type: One of the following *AccountIdentification4Choice* element(s) must be used:

Ref	Or	Message Item	<XML Tag>	Mult.	Represent./ Type
<u>1.1.0</u>	{Or	IBAN	<IBAN>	[1..1]	Identifier
<u>1.1.1</u>	Or}	Other	<Othr>	[1..1]	
<u>1.1.2</u>		Identification	<Id>	[1..1]	Text
<u>1.1.3</u>		SchemeName	<SchmeNm>	[0..1]	
<u>1.1.4</u>	{{Or	Code	<Cd>	[1..1]	Code
<u>1.1.5</u>	Or}}	Proprietary	<Prtry>	[1..1]	Text
<u>1.1.6</u>		Issuer	<Issr>	[0..1]	Text

1.1.0 IBAN <IBAN>

Presence: [1..1]

This message item is part of choice 1.1 AccountIdentification4Choice.

*Impacted by **R4** in message definition *IdentificationModificationAdviceV02*, **R4** in message definition *IdentificationVerificationReportV02*, **R4** in message definition *IdentificationVerificationRequestV02*. Please refer to p.7, p.33, p.21 for additional information.*

Definition: International Bank Account Number (IBAN) - identifier used internationally by financial institutions to uniquely identify the account of a customer. Further specifications of the format and content of the IBAN can be found in the standard ISO 13616 "Banking and related financial services - International Bank Account Number (IBAN)" version 1997-10-01, or later revisions.

Data Type: IBAN2007Identifier

Format: [A-Z]{2,2}[0-9]{2,2}[a-zA-Z0-9]{1,30}

Rule(s): IBAN

A valid IBAN consists of all three of the following components: Country Code, check digits and BBAN.

1.1.1 Other <Othr>

Presence: [1..1]

This message item is part of choice 1.1 AccountIdentification4Choice.

Definition: Unique identification of an account, as assigned by the account servicer, using an identification scheme.

Type: This message item is composed of the following *GenericAccountIdentification1* element(s):

Ref	Or	Message Item	<XML Tag>	Mult.	Represent./ Type
<u>1.1.2</u>		Identification	<Id>	[1..1]	Text
<u>1.1.3</u>		SchemeName	<SchmeNm>	[0..1]	
<u>1.1.6</u>		Issuer	<Issr>	[0..1]	Text

1.1.2 Identification <Id>

Presence: [1..1]

Definition: Identification assigned by an institution.

Data Type: Max34Text

Format: maxLength: 34

minLength: 1

1.1.3 SchemeName <SchmeNm>

Presence: [0..1]

Definition: Name of the identification scheme

Type: This message item is composed of one of the following *AccountSchemeName1Choice* element(s):

Ref	Or	Message Item	<XML Tag>	Mult.	Represent./ Type
<u>1.1.4</u>	{Or	Code	<Cd>	[1..1]	Code
<u>1.1.5</u>	Or}	Proprietary	<Prtry>	[1..1]	Text

1.1.4 Code <Cd>

Presence: [1..1]

This message item is part of choice 1.1.3 SchemeName.

Definition: Name of the identification scheme, in a coded form as published in an external list.

Data Type: ExternalAccountIdentification1Code

Format: maxLength: 4

minLength: 1

1.1.5 Proprietary <Prtry>

Presence: [1..1]

This message item is part of choice 1.1.3 SchemeName.

Definition: Name of the identification scheme, in a free text form.

Data Type: Max35Text

Format: maxLength: 35

minLength: 1

1.1.6 Issuer <Issr>

Presence: [0..1]

Definition: Entity that assigns the identification.

Data Type: Max35Text

Format: maxLength: 35
minLength: 1

2 Financial institution identification

2.1 BranchAndFinancialInstitutionIdentification5

BranchAndFinancialInstitutionIdentification5 is used in message definition *IdentificationModificationAdviceV02* p.6, p.6, p.6, p.6, p.6, p.6, message definition *IdentificationVerificationReportV02* p.32, p.32, p.32, p.32, p.32, p.32, p.33, message definition *IdentificationVerificationRequestV02* p.19, p.19, p.19, p.20, p.20.

Definition: Set of elements used to uniquely and unambiguously identify a financial institution or a branch of a financial institution.

Type: The following *BranchAndFinancialInstitutionIdentification5* element(s) must be used:

Ref	Or	Message Item	<XML Tag>	Mult.	Represent./ Type
<u>2.1.0</u>		FinancialInstitutionIdentification	<FinInstnId>	[1..1]	
<u>2.1.1</u>		BICFI	<BICFI>	[0..1]	Identifier
<u>2.1.2</u>		ClearingSystemMemberIdentification	<ClrSysMmbId>	[0..1]	
<u>2.1.3</u>		ClearingSystemIdentification	<ClrSysId>	[0..1]	
<u>2.1.4</u>	{ Or	Code	<Cd>	[1..1]	Code
<u>2.1.5</u>	Or }	Proprietary	<Prtry>	[1..1]	Text
<u>2.1.6</u>		MemberIdentification	<MmbId>	[1..1]	Text
<u>2.1.7</u>		Name	<Nm>	[0..1]	Text
<u>2.1.8</u>		PostalAddress	<PstlAdr>	[0..1]	
<u>2.1.9</u>		AddressType	<AdrTp>	[0..1]	Code
<u>2.1.10</u>		Department	<Dept>	[0..1]	Text
<u>2.1.11</u>		SubDepartment	<SubDept>	[0..1]	Text
<u>2.1.12</u>		StreetName	<StrtNm>	[0..1]	Text
<u>2.1.13</u>		BuildingNumber	<BldgNb>	[0..1]	Text
<u>2.1.14</u>		PostCode	<PstCd>	[0..1]	Text
<u>2.1.15</u>		TownName	<TwnNm>	[0..1]	Text
<u>2.1.16</u>		CountrySubDivision	<CtrySubDvsn>	[0..1]	Text
<u>2.1.17</u>		Country	<Ctry>	[0..1]	Code
<u>2.1.18</u>		AddressLine	<AdrLine>	[0..7]	Text
<u>2.1.19</u>		Other	<Othr>	[0..1]	
<u>2.1.20</u>		Identification	<Id>	[1..1]	Text
<u>2.1.21</u>		SchemeName	<SchmeNm>	[0..1]	
<u>2.1.22</u>	{ Or	Code	<Cd>	[1..1]	Code
<u>2.1.23</u>	Or }	Proprietary	<Prtry>	[1..1]	Text
<u>2.1.24</u>		Issuer	<Issr>	[0..1]	Text

Ref	Or	Message Item	<XML Tag>	Mult.	Represent./ Type
2.1.25		BranchIdentification	<BrnchId>	[0..1]	
2.1.26		Identification	<Id>	[0..1]	Text
2.1.27		Name	<Nm>	[0..1]	Text
2.1.28		PostalAddress	<PstlAdr>	[0..1]	
2.1.29		AddressType	<AdrTp>	[0..1]	Code
2.1.30		Department	<Dept>	[0..1]	Text
2.1.31		SubDepartment	<SubDept>	[0..1]	Text
2.1.32		StreetName	<StrtNm>	[0..1]	Text
2.1.33		BuildingNumber	<BldgNb>	[0..1]	Text
2.1.34		PostCode	<PstCd>	[0..1]	Text
2.1.35		TownName	<TwnNm>	[0..1]	Text
2.1.36		CountrySubDivision	<CtrySubDvsn>	[0..1]	Text
2.1.37		Country	<Ctry>	[0..1]	Code
2.1.38		AddressLine	<AdrLine>	[0..7]	Text

2.1.0 FinancialInstitutionIdentification <FinInstnId>

Presence: [1..1]

Definition: Unique and unambiguous identification of a financial institution, as assigned under an internationally recognised or proprietary identification scheme.

Type: This message item is composed of the following *FinancialInstitutionIdentification8* element(s):

Ref	Or	Message Item	<XML Tag>	Mult.	Represent./ Type
2.1.1		BICFI	<BICFI>	[0..1]	Identifier
2.1.2		ClearingSystemMemberIdentification	<ClrSysMmbId>	[0..1]	
2.1.7		Name	<Nm>	[0..1]	Text
2.1.8		PostalAddress	<PstlAdr>	[0..1]	
2.1.19		Other	<Othr>	[0..1]	

2.1.1 BICFI <BICFI>

Presence: [0..1]

Impacted by **R3** in message definition *IdentificationModificationAdviceV02*, **R3** in message definition *IdentificationVerificationReportV02*, **R3** in message definition *IdentificationVerificationRequestV02*. Please refer to p.7, p.33, p.21 for additional information.

Definition: Code allocated to a financial institution by the ISO 9362 Registration Authority as described in ISO 9362 "Banking - Banking telecommunication messages - Business identifier code (BIC)".

Data Type: BICFIIdentifier

Format: [A-Z]{6,6}[A-Z2-9][A-NP-Z0-9]([A-Z0-9]{3,3}){0,1}

Rule(s): BICFI

Valid BICs for financial institutions are registered by the ISO 9362 Registration Authority in the BIC directory, and consist of eight (8) or eleven (11) contiguous characters comprising the first three or all four of the following components: INSTITUTION CODE, COUNTRY CODE, LOCATION CODE, BRANCH CODE. The institution code, country code and location code are mandatory, while the branch code is optional.

2.1.2 ClearingSystemMemberIdentification <ClrSysMmbld>

Presence: [0..1]

Definition: Information used to identify a member within a clearing system.

Type: This message item is composed of the following *ClearingSystemMemberIdentification2* element(s):

Ref	Or	Message Item	<XML Tag>	Mult.	Represent./ Type
<u>2.1.3</u>		ClearingSystemIdentification	<ClrSysId>	[0..1]	
<u>2.1.6</u>		MemberIdentification	<Mmbld>	[1..1]	Text

2.1.3 ClearingSystemIdentification <ClrSysId>

Presence: [0..1]

Definition: Specification of a pre-agreed offering between clearing agents or the channel through which the payment instruction is processed.

Type: This message item is composed of one of the following *ClearingSystemIdentification2Choice* element(s):

Ref	Or	Message Item	<XML Tag>	Mult.	Represent./ Type
<u>2.1.4</u>	{Or	Code	<Cd>	[1..1]	Code
<u>2.1.5</u>	Or}	Proprietary	<Prtry>	[1..1]	Text

2.1.4 Code <Cd>

Presence: [1..1]

This message item is part of choice 2.1.3 ClearingSystemIdentification.

Definition: Identification of a clearing system, in a coded form as published in an external list.

Data Type: ExternalClearingSystemIdentification1Code

Format: maxLength: 5

minLength: 1

2.1.5 Proprietary <Prtry>

Presence: [1..1]

This message item is part of choice 2.1.3 ClearingSystemIdentification.

Definition: Identification code for a clearing system, that has not yet been identified in the list of clearing systems.

Data Type: Max35Text

Format: maxLength: 35

minLength: 1

2.1.6 MemberIdentification <Mmbld>

Presence: [1..1]

Definition: Identification of a member of a clearing system.

Data Type: Max35Text

Format: maxLength: 35

minLength: 1

2.1.7 Name <Nm>

Presence: [0..1]

Definition: Name by which an agent is known and which is usually used to identify that agent.

Data Type: Max140Text

Format: maxLength: 140

minLength: 1

2.1.8 PostalAddress <PstlAdr>

Presence: [0..1]

Definition: Information that locates and identifies a specific address, as defined by postal services.

Type: *This message item is composed of the following **PostalAddress6** element(s):*

Ref	Or	Message Item	<XML Tag>	Mult.	Represent./ Type
2.1.9		AddressType	<AdrTp>	[0..1]	Code
2.1.10		Department	<Dept>	[0..1]	Text
2.1.11		SubDepartment	<SubDept>	[0..1]	Text
2.1.12		StreetName	<StrtNm>	[0..1]	Text
2.1.13		BuildingNumber	<BldgNb>	[0..1]	Text
2.1.14		PostCode	<PstCd>	[0..1]	Text
2.1.15		TownName	<TwnNm>	[0..1]	Text
2.1.16		CountrySubDivision	<CtrySubDvsn>	[0..1]	Text
2.1.17		Country	<Ctry>	[0..1]	Code
2.1.18		AddressLine	<AdrLine>	[0..7]	Text

2.1.9 AddressType <AdrTp>

Presence: [0..1]

Definition: Identifies the nature of the postal address.

Data Type: Code

*When this message item is present, one of the following **AddressType2Code** values must be used:*

Code	Name	Definition
ADDR	Postal	Address is the complete postal address.
BIZZ	Business	Address is the business address.
DLVY	DeliveryTo	Address is the address to which delivery is to take place.

Code	Name	Definition
HOME	Residential	Address is the home address.
MLTO	MailTo	Address is the address to which mail is sent.
PBOX	POBox	Address is a postal office (PO) box.

2.1.10 Department <Dept>

Presence: [0..1]

Definition: Identification of a division of a large organisation or building.

Data Type: Max70Text

Format: maxLength: 70
minLength: 1

2.1.11 SubDepartment <SubDept>

Presence: [0..1]

Definition: Identification of a sub-division of a large organisation or building.

Data Type: Max70Text

Format: maxLength: 70
minLength: 1

2.1.12 StreetName <StrtNm>

Presence: [0..1]

Definition: Name of a street or thoroughfare.

Data Type: Max70Text

Format: maxLength: 70
minLength: 1

2.1.13 BuildingNumber <BldgNb>

Presence: [0..1]

Definition: Number that identifies the position of a building on a street.

Data Type: Max16Text

Format: maxLength: 16
minLength: 1

2.1.14 PostCode <PstCd>

Presence: [0..1]

Definition: Identifier consisting of a group of letters and/or numbers that is added to a postal address to assist the sorting of mail.

Data Type: Max16Text

Format: maxLength: 16
minLength: 1

2.1.15 TownName <TwnNm>

Presence: [0..1]

Definition: Name of a built-up area, with defined boundaries, and a local government.

Data Type: Max35Text

Format: maxLength: 35
minLength: 1

2.1.16 CountrySubDivision <CtrySubDvsn>

Presence: [0..1]

Definition: Identifies a subdivision of a country such as state, region, county.

Data Type: Max35Text

Format: maxLength: 35
minLength: 1

2.1.17 Country <Ctry>

Presence: [0..1]

*Impacted by **R1** in message definition **IdentificationModificationAdviceV02**, **R1** in message definition **IdentificationVerificationReportV02**, **R1** in message definition **IdentificationVerificationRequestV02**. Please refer to p.7, p.33, p.20 for additional information.*

Definition: Nation with its own government.

Data Type: CountryCode

Format: [A-Z]{2,2}

Rule(s): Country

The code is checked against the list of country names obtained from the United Nations (ISO 3166, Alpha-2 code).

2.1.18 AddressLine <AdrLine>

Presence: [0..7]

Definition: Information that locates and identifies a specific address, as defined by postal services, presented in free format text.

Data Type: Max70Text

Format: maxLength: 70
minLength: 1

2.1.19 Other <Othr>

Presence: [0..1]

Definition: Unique identification of an agent, as assigned by an institution, using an identification scheme.

Type: *This message item is composed of the following **GenericFinancialIdentification1** element(s):*

Ref	Or	Message Item	<XML Tag>	Mult.	Represent./ Type
2.1.20		Identification	<Id>	[1..1]	Text
2.1.21		SchemeName	<SchmeNm>	[0..1]	
2.1.24		Issuer	<Issr>	[0..1]	Text

2.1.20 Identification <Id>

Presence: [1..1]

Definition: Unique and unambiguous identification of a person.

Data Type: Max35Text

Format: maxLength: 35
minLength: 1

2.1.21 SchemeName <SchmeNm>

Presence: [0..1]

Definition: Name of the identification scheme.

Type: This message item is composed of one of the following *FinancialIdentificationSchemeName1Choice* element(s):

Ref	Or	Message Item	<XML Tag>	Mult.	Represent./ Type
<u>2.1.22</u>	{Or	Code	<Cd>	[1..1]	Code
<u>2.1.23</u>	Or}	Proprietary	<Prtry>	[1..1]	Text

2.1.22 Code <Cd>

Presence: [1..1]

This message item is part of choice 2.1.21 SchemeName.

Definition: Name of the identification scheme, in a coded form as published in an external list.

Data Type: ExternalFinancialInstitutionIdentification1Code

Format: maxLength: 4
minLength: 1

2.1.23 Proprietary <Prtry>

Presence: [1..1]

This message item is part of choice 2.1.21 SchemeName.

Definition: Name of the identification scheme, in a free text form.

Data Type: Max35Text

Format: maxLength: 35
minLength: 1

2.1.24 Issuer <Issr>

Presence: [0..1]

Definition: Entity that assigns the identification.

Data Type: Max35Text

Format: maxLength: 35
minLength: 1

2.1.25 BranchIdentification <BrnchId>

Presence: [0..1]

Definition: Identifies a specific branch of a financial institution.

Usage: This component should be used in case the identification information in the financial institution component does not provide identification up to branch level.

Type: This message item is composed of the following **BranchData2** element(s):

Ref	Or	Message Item	<XML Tag>	Mult.	Represent./ Type
2.1.26		Identification	<Id>	[0..1]	Text
2.1.27		Name	<Nm>	[0..1]	Text
2.1.28		PostalAddress	<PstlAdr>	[0..1]	

2.1.26 Identification <Id>

Presence: [0..1]

Definition: Unique and unambiguous identification of a branch of a financial institution.

Data Type: Max35Text

Format: maxLength: 35
minLength: 1

2.1.27 Name <Nm>

Presence: [0..1]

Definition: Name by which an agent is known and which is usually used to identify that agent.

Data Type: Max140Text

Format: maxLength: 140
minLength: 1

2.1.28 PostalAddress <PstlAdr>

Presence: [0..1]

Definition: Information that locates and identifies a specific address, as defined by postal services.

Type: This message item is composed of the following **PostalAddress6** element(s):

Ref	Or	Message Item	<XML Tag>	Mult.	Represent./ Type
2.1.29		AddressType	<AdrTp>	[0..1]	Code
2.1.30		Department	<Dept>	[0..1]	Text
2.1.31		SubDepartment	<SubDept>	[0..1]	Text
2.1.32		StreetName	<StrtNm>	[0..1]	Text
2.1.33		BuildingNumber	<BldgNb>	[0..1]	Text
2.1.34		PostCode	<PstCd>	[0..1]	Text
2.1.35		TownName	<TwnNm>	[0..1]	Text
2.1.36		CountrySubDivision	<CtrySubDvsn>	[0..1]	Text
2.1.37		Country	<Ctry>	[0..1]	Code
2.1.38		AddressLine	<AdrLine>	[0..7]	Text

2.1.29 AddressType <AdrTp>

Presence: [0..1]

Definition: Identifies the nature of the postal address.

Data Type: Code

*When this message item is present, one of the following **AddressType2Code** values must be used:*

Code	Name	Definition
ADDR	Postal	Address is the complete postal address.
BIZZ	Business	Address is the business address.
DLVY	DeliveryTo	Address is the address to which delivery is to take place.
HOME	Residential	Address is the home address.
MLTO	MailTo	Address is the address to which mail is sent.
PBOX	POBox	Address is a postal office (PO) box.

2.1.30 Department <Dept>

Presence: [0..1]

Definition: Identification of a division of a large organisation or building.

Data Type: Max70Text

Format: maxLength: 70

minLength: 1

2.1.31 SubDepartment <SubDept>

Presence: [0..1]

Definition: Identification of a sub-division of a large organisation or building.

Data Type: Max70Text

Format: maxLength: 70

minLength: 1

2.1.32 StreetName <StrtNm>

Presence: [0..1]

Definition: Name of a street or thoroughfare.

Data Type: Max70Text

Format: maxLength: 70

minLength: 1

2.1.33 BuildingNumber <BldgNb>

Presence: [0..1]

Definition: Number that identifies the position of a building on a street.

Data Type: Max16Text

Format: maxLength: 16

minLength: 1

2.1.34 PostCode <PstCd>

Presence: [0..1]

Definition: Identifier consisting of a group of letters and/or numbers that is added to a postal address to assist the sorting of mail.

Data Type: Max16Text

Format: maxLength: 16
minLength: 1

2.1.35 TownName <TwnNm>

Presence: [0..1]

Definition: Name of a built-up area, with defined boundaries, and a local government.

Data Type: Max35Text

Format: maxLength: 35
minLength: 1

2.1.36 CountrySubDivision <CtrySubDvsn>

Presence: [0..1]

Definition: Identifies a subdivision of a country such as state, region, county.

Data Type: Max35Text

Format: maxLength: 35
minLength: 1

2.1.37 Country <Ctry>

Presence: [0..1]

*Impacted by **R1** in message definition **IdentificationModificationAdviceV02**, **R1** in message definition **IdentificationVerificationReportV02**, **R1** in message definition **IdentificationVerificationRequestV02**. Please refer to p.7, p.33, p.20 for additional information.*

Definition: Nation with its own government.

Data Type: CountryCode

Format: [A-Z]{2,2}

Rule(s): Country

The code is checked against the list of country names obtained from the United Nations (ISO 3166, Alpha-2 code).

2.1.38 AddressLine <AdrLine>

Presence: [0..7]

Definition: Information that locates and identifies a specific address, as defined by postal services, presented in free format text.

Data Type: Max70Text

Format: maxLength: 70
minLength: 1

3 Miscellaneous

3.1 OriginalTransactionReference18

*OriginalTransactionReference18 is used in message definition **IdentificationModificationAdviceV02** p.6.*

Definition: Provides reference information to the original message.

Type: The following **OriginalTransactionReference18** element(s) must be used:

Ref	Or	Message Item	<XML Tag>	Mult.	Represent./ Type
3.1.0		MessageIdentification	<MsgId>	[0..1]	Text
3.1.1		MessageNameIdentification	<MsgNmId>	[0..1]	Text
3.1.2		CreationDateTime	<CreDtTm>	[0..1]	DateTime
3.1.3		OriginalTransaction	<OrgnlTx>	[0..*]	
3.1.4		InstructionIdentification	<InstrId>	[0..1]	Text
3.1.5		EndToEndIdentification	<EndToEndId>	[1..1]	Text
3.1.6		TransactionIdentification	<TxId>	[1..1]	Text
3.1.7		ClearingSystemReference	<ClrSysRef>	[0..1]	Text
3.1.8		FirstAgent	<FrstAgt>	[0..1]	
3.1.9		FinancialInstitutionIdentification	<FinInstnId>	[1..1]	
3.1.10		BICFI	<BICFI>	[0..1]	Identifier
3.1.11		ClearingSystemMemberIdentification	<ClrSysMmbId>	[0..1]	
3.1.12		ClearingSystemIdentification	<ClrSysId>	[0..1]	
3.1.13	{Or	Code	<Cd>	[1..1]	Code
3.1.14	Or}	Proprietary	<Prtry>	[1..1]	Text
3.1.15		MemberIdentification	<MmbId>	[1..1]	Text
3.1.16		Name	<Nm>	[0..1]	Text
3.1.17		PostalAddress	<PstlAdr>	[0..1]	
3.1.18		AddressType	<AdrTp>	[0..1]	Code
3.1.19		Department	<Dept>	[0..1]	Text
3.1.20		SubDepartment	<SubDept>	[0..1]	Text
3.1.21		StreetName	<StrtNm>	[0..1]	Text
3.1.22		BuildingNumber	<BldgNb>	[0..1]	Text
3.1.23		PostCode	<PstCd>	[0..1]	Text
3.1.24		TownName	<TwnNm>	[0..1]	Text
3.1.25		CountrySubDivision	<CtrySubDvsn>	[0..1]	Text
3.1.26		Country	<Ctry>	[0..1]	Code
3.1.27		AddressLine	<AdrLine>	[0..7]	Text
3.1.28		Other	<Othr>	[0..1]	
3.1.29		Identification	<Id>	[1..1]	Text
3.1.30		SchemeName	<SchmeNm>	[0..1]	
3.1.31	{Or	Code	<Cd>	[1..1]	Code
3.1.32	Or}	Proprietary	<Prtry>	[1..1]	Text
3.1.33		Issuer	<Issr>	[0..1]	Text
3.1.34		BranchIdentification	<BrnchId>	[0..1]	
3.1.35		Identification	<Id>	[0..1]	Text

Ref	Or	Message Item	<XML Tag>	Mult.	Represent./ Type
3.1.36		Name	<Nm>	[0..1]	Text
3.1.37		PostalAddress	<PstlAdr>	[0..1]	
3.1.38		AddressType	<AdrTp>	[0..1]	Code
3.1.39		Department	<Dept>	[0..1]	Text
3.1.40		SubDepartment	<SubDept>	[0..1]	Text
3.1.41		StreetName	<StrtNm>	[0..1]	Text
3.1.42		BuildingNumber	<BldgNb>	[0..1]	Text
3.1.43		PostCode	<PstCd>	[0..1]	Text
3.1.44		TownName	<TwnNm>	[0..1]	Text
3.1.45		CountrySubDivision	<CtrySubDvsn>	[0..1]	Text
3.1.46		Country	<Ctry>	[0..1]	Code
3.1.47		AddressLine	<AdrLine>	[0..7]	Text

3.1.0 MessageIdentification <MsgId>

Presence: [0..1]

Definition: Point to point reference, as assigned by the original instructing party, to unambiguously identify the original message.

Data Type: Max35Text

Format: maxLength: 35
minLength: 1

3.1.1 MessageNameIdentification <MsgNmId>

Presence: [0..1]

Definition: Specifies the original message name identifier to which the message refers.

Data Type: Max35Text

Format: maxLength: 35
minLength: 1

3.1.2 CreationDateTime <CreDtTm>

Presence: [0..1]

Definition: Date and time at which the original message was created.

Data Type: ISODateTime

3.1.3 OriginalTransaction <OrgnlTx>

Presence: [0..*]

Definition: Provides reference information to the original transaction.

Type: This message item is composed of the following *PaymentIdentification4* element(s):

Ref	Or	Message Item	<XML Tag>	Mult.	Represent./ Type
3.1.4		InstructionIdentification	<InstrId>	[0..1]	Text
3.1.5		EndToEndIdentification	<EndToEndId>	[1..1]	Text
3.1.6		TransactionIdentification	<TxId>	[1..1]	Text
3.1.7		ClearingSystemReference	<ClrSysRef>	[0..1]	Text
3.1.8		FirstAgent	<FrstAgt>	[0..1]	

3.1.4 InstructionIdentification <InstrId>

Presence: [0..1]

Definition: Unique identification, as assigned by an instructing party for an instructed party, to unambiguously identify the instruction.

Usage: The instruction identification is a point to point reference that can be used between the instructing party and the instructed party to refer to the individual instruction. It can be included in several messages related to the instruction.

Data Type: Max35Text

Format: maxLength: 35
minLength: 1

3.1.5 EndToEndIdentification <EndToEndId>

Presence: [1..1]

Definition: Unique identification, as assigned by the initiating party, to unambiguously identify the transaction. This identification is passed on, unchanged, throughout the entire end-to-end chain.

Usage: The end-to-end identification can be used for reconciliation or to link tasks relating to the transaction. It can be included in several messages related to the transaction.

Usage: In case there are technical limitations to pass on multiple references, the end-to-end identification must be passed on throughout the entire end-to-end chain.

Data Type: Max35Text

Format: maxLength: 35
minLength: 1

3.1.6 TransactionIdentification <TxId>

Presence: [1..1]

Definition: Unique identification, as assigned by the first instructing agent, to unambiguously identify the transaction that is passed on, unchanged, throughout the entire interbank chain.

Usage: The transaction identification can be used for reconciliation, tracking or to link tasks relating to the transaction on the interbank level.

Usage: The instructing agent has to make sure that the transaction identification is unique for a pre-agreed period.

Data Type: Max35Text

Format: maxLength: 35
minLength: 1

3.1.7 ClearingSystemReference <ClrSysRef>

Presence: [0..1]

Definition: Unique reference, as assigned by a clearing system, to unambiguously identify the instruction.

Data Type: Max35Text

Format: maxLength: 35

minLength: 1

3.1.8 FirstAgent <FrstAgt>

Presence: [0..1]

Definition: Identifies the first agent in the identification chain, following the payment initiating party.

Type: This message item is composed of the following *BranchAndFinancialInstitutionIdentification5* element(s):

Ref	Or	Message Item	<XML Tag>	Mult.	Represent./ Type
3.1.9		FinancialInstitutionIdentification	<FinInstnId>	[1..1]	
3.1.34		BranchIdentification	<BrnchId>	[0..1]	

3.1.9 FinancialInstitutionIdentification <FinInstnId>

Presence: [1..1]

Definition: Unique and unambiguous identification of a financial institution, as assigned under an internationally recognised or proprietary identification scheme.

Type: This message item is composed of the following *FinancialInstitutionIdentification8* element(s):

Ref	Or	Message Item	<XML Tag>	Mult.	Represent./ Type
3.1.10		BICFI	<BICFI>	[0..1]	Identifier
3.1.11		ClearingSystemMemberIdentification	<ClrSysMmbId>	[0..1]	
3.1.16		Name	<Nm>	[0..1]	Text
3.1.17		PostalAddress	<PstlAdr>	[0..1]	
3.1.28		Other	<Othr>	[0..1]	

3.1.10 BICFI <BICFI>

Presence: [0..1]

Impacted by **R3** in message definition *IdentificationModificationAdviceV02*, **R3** in message definition *IdentificationVerificationReportV02*, **R3** in message definition *IdentificationVerificationRequestV02*. Please refer to p.7, p.33, p.21 for additional information.

Definition: Code allocated to a financial institution by the ISO 9362 Registration Authority as described in ISO 9362 "Banking - Banking telecommunication messages - Business identifier code (BIC)".

Data Type: BICFIIdentifier

Format: [A-Z]{6,6}[A-Z2-9][A-NP-Z0-9]([A-Z0-9]{3,3}){0,1}

Rule(s): BICFI

Valid BICs for financial institutions are registered by the ISO 9362 Registration Authority in the BIC directory, and consist of eight (8) or eleven (11) contiguous characters comprising the first three or all four of the following components: INSTITUTION CODE, COUNTRY CODE, LOCATION CODE, BRANCH CODE. The institution code, country code and location code are mandatory, while the branch code is optional.

3.1.11 ClearingSystemMemberIdentification <ClrSysMmbld>

Presence: [0..1]

Definition: Information used to identify a member within a clearing system.

Type: *This message item is composed of the following **ClearingSystemMemberIdentification2** element(s):*

Ref	Or	Message Item	<XML Tag>	Mult.	Represent./ Type
<u>3.1.12</u>		ClearingSystemIdentification	<ClrSysId>	[0..1]	
<u>3.1.15</u>		MemberIdentification	<Mmbld>	[1..1]	Text

3.1.12 ClearingSystemIdentification <ClrSysId>

Presence: [0..1]

Definition: Specification of a pre-agreed offering between clearing agents or the channel through which the payment instruction is processed.

Type: *This message item is composed of one of the following **ClearingSystemIdentification2Choice** element(s):*

Ref	Or	Message Item	<XML Tag>	Mult.	Represent./ Type
<u>3.1.13</u>	{Or	Code	<Cd>	[1..1]	Code
<u>3.1.14</u>	Or}	Proprietary	<Prtry>	[1..1]	Text

3.1.13 Code <Cd>

Presence: [1..1]

*This message item is part of choice 3.1.12 **ClearingSystemIdentification**.*

Definition: Identification of a clearing system, in a coded form as published in an external list.

Data Type: ExternalClearingSystemIdentification1Code

Format: maxLength: 5

minLength: 1

3.1.14 Proprietary <Prtry>

Presence: [1..1]

*This message item is part of choice 3.1.12 **ClearingSystemIdentification**.*

Definition: Identification code for a clearing system, that has not yet been identified in the list of clearing systems.

Data Type: Max35Text

Format: maxLength: 35

minLength: 1

3.1.15 MemberIdentification <Mmbld>

Presence: [1..1]

Definition: Identification of a member of a clearing system.

Data Type: Max35Text

Format: maxLength: 35

minLength: 1

3.1.16 Name <Nm>

Presence: [0..1]

Definition: Name by which an agent is known and which is usually used to identify that agent.

Data Type: Max140Text

Format: maxLength: 140

minLength: 1

3.1.17 PostalAddress <PstlAdr>

Presence: [0..1]

Definition: Information that locates and identifies a specific address, as defined by postal services.

Type: *This message item is composed of the following **PostalAddress6** element(s):*

Ref	Or	Message Item	<XML Tag>	Mult.	Represent./ Type
3.1.18		AddressType	<AdrTp>	[0..1]	Code
3.1.19		Department	<Dept>	[0..1]	Text
3.1.20		SubDepartment	<SubDept>	[0..1]	Text
3.1.21		StreetName	<StrtNm>	[0..1]	Text
3.1.22		BuildingNumber	<BldgNb>	[0..1]	Text
3.1.23		PostCode	<PstCd>	[0..1]	Text
3.1.24		TownName	<TwnNm>	[0..1]	Text
3.1.25		CountrySubDivision	<CtrySubDvsn>	[0..1]	Text
3.1.26		Country	<Ctry>	[0..1]	Code
3.1.27		AddressLine	<AdrLine>	[0..7]	Text

3.1.18 AddressType <AdrTp>

Presence: [0..1]

Definition: Identifies the nature of the postal address.

Data Type: Code

*When this message item is present, one of the following **AddressType2Code** values must be used:*

Code	Name	Definition
ADDR	Postal	Address is the complete postal address.
BIZZ	Business	Address is the business address.
DLVY	DeliveryTo	Address is the address to which delivery is to take place.

Code	Name	Definition
HOME	Residential	Address is the home address.
MLTO	MailTo	Address is the address to which mail is sent.
PBOX	POBox	Address is a postal office (PO) box.

3.1.19 Department <Dept>

Presence: [0..1]

Definition: Identification of a division of a large organisation or building.

Data Type: Max70Text

Format: maxLength: 70
minLength: 1

3.1.20 SubDepartment <SubDept>

Presence: [0..1]

Definition: Identification of a sub-division of a large organisation or building.

Data Type: Max70Text

Format: maxLength: 70
minLength: 1

3.1.21 StreetName <StrtNm>

Presence: [0..1]

Definition: Name of a street or thoroughfare.

Data Type: Max70Text

Format: maxLength: 70
minLength: 1

3.1.22 BuildingNumber <BldgNb>

Presence: [0..1]

Definition: Number that identifies the position of a building on a street.

Data Type: Max16Text

Format: maxLength: 16
minLength: 1

3.1.23 PostCode <PstCd>

Presence: [0..1]

Definition: Identifier consisting of a group of letters and/or numbers that is added to a postal address to assist the sorting of mail.

Data Type: Max16Text

Format: maxLength: 16
minLength: 1

3.1.24 TownName <TwnNm>

Presence: [0..1]

Definition: Name of a built-up area, with defined boundaries, and a local government.

Data Type: Max35Text

Format: maxLength: 35
minLength: 1

3.1.25 CountrySubDivision <CtrySubDvsn>

Presence: [0..1]

Definition: Identifies a subdivision of a country such as state, region, county.

Data Type: Max35Text

Format: maxLength: 35
minLength: 1

3.1.26 Country <Ctry>

Presence: [0..1]

*Impacted by **R1** in message definition **IdentificationModificationAdviceV02**, **R1** in message definition **IdentificationVerificationReportV02**, **R1** in message definition **IdentificationVerificationRequestV02**. Please refer to p.7, p.33, p.20 for additional information.*

Definition: Nation with its own government.

Data Type: CountryCode

Format: [A-Z]{2,2}

Rule(s): Country

The code is checked against the list of country names obtained from the United Nations (ISO 3166, Alpha-2 code).

3.1.27 AddressLine <AdrLine>

Presence: [0..7]

Definition: Information that locates and identifies a specific address, as defined by postal services, presented in free format text.

Data Type: Max70Text

Format: maxLength: 70
minLength: 1

3.1.28 Other <Othr>

Presence: [0..1]

Definition: Unique identification of an agent, as assigned by an institution, using an identification scheme.

Type: *This message item is composed of the following **GenericFinancialIdentification1** element(s):*

Ref	Or	Message Item	<XML Tag>	Mult.	Represent./ Type
3.1.29		Identification	<Id>	[1..1]	Text
3.1.30		SchemeName	<SchmeNm>	[0..1]	
3.1.33		Issuer	<Issr>	[0..1]	Text

3.1.29 Identification <Id>

Presence: [1..1]

Definition: Unique and unambiguous identification of a person.

Data Type: Max35Text

Format: maxLength: 35
minLength: 1

3.1.30 SchemeName <SchmeNm>

Presence: [0..1]

Definition: Name of the identification scheme.

Type: *This message item is composed of one of the following **FinancialIdentificationSchemeName1Choice** element(s):*

Ref	Or	Message Item	<XML Tag>	Mult.	Represent./ Type
3.1.31	{Or	Code	<Cd>	[1..1]	Code
3.1.32	Or}	Proprietary	<Prtry>	[1..1]	Text

3.1.31 Code <Cd>

Presence: [1..1]

*This message item is part of choice 3.1.30 **SchemeName**.*

Definition: Name of the identification scheme, in a coded form as published in an external list.

Data Type: ExternalFinancialInstitutionIdentification1Code

Format: maxLength: 4
minLength: 1

3.1.32 Proprietary <Prtry>

Presence: [1..1]

*This message item is part of choice 3.1.30 **SchemeName**.*

Definition: Name of the identification scheme, in a free text form.

Data Type: Max35Text

Format: maxLength: 35
minLength: 1

3.1.33 Issuer <Issr>

Presence: [0..1]

Definition: Entity that assigns the identification.

Data Type: Max35Text

Format: maxLength: 35
minLength: 1

3.1.34 BranchIdentification <BrnchId>

Presence: [0..1]

Definition: Identifies a specific branch of a financial institution.

Usage: This component should be used in case the identification information in the financial institution component does not provide identification up to branch level.

Type: This message item is composed of the following **BranchData2** element(s):

Ref	Or	Message Item	<XML Tag>	Mult.	Represent./ Type
3.1.35		Identification	<Id>	[0..1]	Text
3.1.36		Name	<Nm>	[0..1]	Text
3.1.37		PostalAddress	<PstlAdr>	[0..1]	

3.1.35 Identification <Id>

Presence: [0..1]

Definition: Unique and unambiguous identification of a branch of a financial institution.

Data Type: Max35Text

Format: maxLength: 35
minLength: 1

3.1.36 Name <Nm>

Presence: [0..1]

Definition: Name by which an agent is known and which is usually used to identify that agent.

Data Type: Max140Text

Format: maxLength: 140
minLength: 1

3.1.37 PostalAddress <PstlAdr>

Presence: [0..1]

Definition: Information that locates and identifies a specific address, as defined by postal services.

Type: This message item is composed of the following **PostalAddress6** element(s):

Ref	Or	Message Item	<XML Tag>	Mult.	Represent./ Type
3.1.38		AddressType	<AdrTp>	[0..1]	Code
3.1.39		Department	<Dept>	[0..1]	Text
3.1.40		SubDepartment	<SubDept>	[0..1]	Text
3.1.41		StreetName	<StrtNm>	[0..1]	Text
3.1.42		BuildingNumber	<BldgNb>	[0..1]	Text
3.1.43		PostCode	<PstCd>	[0..1]	Text
3.1.44		TownName	<TwnNm>	[0..1]	Text
3.1.45		CountrySubDivision	<CtrySubDvsn>	[0..1]	Text
3.1.46		Country	<Ctry>	[0..1]	Code
3.1.47		AddressLine	<AdrLine>	[0..7]	Text

3.1.38 AddressType <AdrTp>

Presence: [0..1]

Definition: Identifies the nature of the postal address.

Data Type: Code

*When this message item is present, one of the following **AddressType2Code** values must be used:*

Code	Name	Definition
ADDR	Postal	Address is the complete postal address.
BIZZ	Business	Address is the business address.
DLVY	DeliveryTo	Address is the address to which delivery is to take place.
HOME	Residential	Address is the home address.
MLTO	MailTo	Address is the address to which mail is sent.
PBOX	POBox	Address is a postal office (PO) box.

3.1.39 Department <Dept>

Presence: [0..1]

Definition: Identification of a division of a large organisation or building.

Data Type: Max70Text

Format: maxLength: 70

minLength: 1

3.1.40 SubDepartment <SubDept>

Presence: [0..1]

Definition: Identification of a sub-division of a large organisation or building.

Data Type: Max70Text

Format: maxLength: 70

minLength: 1

3.1.41 StreetName <StrtNm>

Presence: [0..1]

Definition: Name of a street or thoroughfare.

Data Type: Max70Text

Format: maxLength: 70

minLength: 1

3.1.42 BuildingNumber <BldgNb>

Presence: [0..1]

Definition: Number that identifies the position of a building on a street.

Data Type: Max16Text

Format: maxLength: 16

minLength: 1

3.1.43 PostCode <PstCd>

Presence: [0..1]

Definition: Identifier consisting of a group of letters and/or numbers that is added to a postal address to assist the sorting of mail.

Data Type: Max16Text

Format: maxLength: 16
minLength: 1

3.1.44 TownName <TwnNm>

Presence: [0..1]

Definition: Name of a built-up area, with defined boundaries, and a local government.

Data Type: Max35Text

Format: maxLength: 35
minLength: 1

3.1.45 CountrySubDivision <CtrySubDvsn>

Presence: [0..1]

Definition: Identifies a subdivision of a country such as state, region, county.

Data Type: Max35Text

Format: maxLength: 35
minLength: 1

3.1.46 Country <Ctry>

Presence: [0..1]

*Impacted by **R1** in message definition **IdentificationModificationAdviceV02**, **R1** in message definition **IdentificationVerificationReportV02**, **R1** in message definition **IdentificationVerificationRequestV02**. Please refer to p.7, p.33, p.20 for additional information.*

Definition: Nation with its own government.

Data Type: CountryCode

Format: [A-Z]{2,2}

Rule(s): Country

The code is checked against the list of country names obtained from the United Nations (ISO 3166, Alpha-2 code).

3.1.47 AddressLine <AdrLine>

Presence: [0..7]

Definition: Information that locates and identifies a specific address, as defined by postal services, presented in free format text.

Data Type: Max70Text

Format: maxLength: 70
minLength: 1

4 Organisation identification

4.1 PartyIdentification43

*PartyIdentification43 is used in message definition **IdentificationModificationAdviceV02** p.6, p.6, p.6, p.6, p.6, message definition **IdentificationVerificationReportV02** p.31, p.32, p.32, p.32, p.32, message definition **IdentificationVerificationRequestV02** p.19, p.19, p.20, p.20.*

Definition: Set of elements used to identify a person or an organisation.

Type: The following **PartyIdentification43** element(s) must be used:

Ref	Or	Message Item	<XML Tag>	Mult.	Represent./ Type
4.1.0		Name	<Nm>	[0..1]	Text
4.1.1		PostalAddress	<PstlAdr>	[0..1]	
4.1.2		AddressType	<AdrTp>	[0..1]	Code
4.1.3		Department	<Dept>	[0..1]	Text
4.1.4		SubDepartment	<SubDept>	[0..1]	Text
4.1.5		StreetName	<StrtNm>	[0..1]	Text
4.1.6		BuildingNumber	<BldgNb>	[0..1]	Text
4.1.7		PostCode	<PstCd>	[0..1]	Text
4.1.8		TownName	<TwnNm>	[0..1]	Text
4.1.9		CountrySubDivision	<CtrySubDvsn>	[0..1]	Text
4.1.10		Country	<Ctry>	[0..1]	Code
4.1.11		AddressLine	<AdrLine>	[0..7]	Text
4.1.12		Identification	<Id>	[0..1]	
4.1.13	{Or	OrganisationIdentification	<OrgId>	[1..1]	
4.1.14		AnyBIC	<AnyBIC>	[0..1]	Identifier
4.1.15		Other	<Othr>	[0..*]	
4.1.16		Identification	<Id>	[1..1]	Text
4.1.17		SchemeName	<SchmeNm>	[0..1]	
4.1.18	{{Or	Code	<Cd>	[1..1]	Code
4.1.19	Or}}	Proprietary	<Prtry>	[1..1]	Text
4.1.20		Issuer	<Issr>	[0..1]	Text
4.1.21	Or}	PrivateIdentification	<PrvtId>	[1..1]	
4.1.22		DateAndPlaceOfBirth	<DtAndPlcOfBirth>	[0..1]	
4.1.23		BirthDate	<BirthDt>	[1..1]	DateTime
4.1.24		ProvinceOfBirth	<PrvcOfBirth>	[0..1]	Text
4.1.25		CityOfBirth	<CityOfBirth>	[1..1]	Text
4.1.26		CountryOfBirth	<CtryOfBirth>	[1..1]	Code
4.1.27		Other	<Othr>	[0..*]	
4.1.28		Identification	<Id>	[1..1]	Text
4.1.29		SchemeName	<SchmeNm>	[0..1]	
4.1.30	{{Or	Code	<Cd>	[1..1]	Code
4.1.31	Or}}	Proprietary	<Prtry>	[1..1]	Text
4.1.32		Issuer	<Issr>	[0..1]	Text
4.1.33		CountryOfResidence	<CtryOfRes>	[0..1]	Code
4.1.34		ContactDetails	<CtctDtls>	[0..1]	

Ref	Or	Message Item	<XML Tag>	Mult.	Represent./ Type
4.1.35		NamePrefix	<NmPrfx>	[0..1]	Code
4.1.36		Name	<Nm>	[0..1]	Text
4.1.37		PhoneNumber	<PhneNb>	[0..1]	Text
4.1.38		MobileNumber	<MobNb>	[0..1]	Text
4.1.39		FaxNumber	<FaxNb>	[0..1]	Text
4.1.40		EmailAddress	<EmailAdr>	[0..1]	Text
4.1.41		Other	<Othr>	[0..1]	Text

4.1.0 Name <Nm>

Presence: [0..1]

Definition: Name by which a party is known and which is usually used to identify that party.

Data Type: Max140Text

Format: maxLength: 140

minLength: 1

4.1.1 PostalAddress <PstlAdr>

Presence: [0..1]

Definition: Information that locates and identifies a specific address, as defined by postal services.

Type: *This message item is composed of the following **PostalAddress6** element(s):*

Ref	Or	Message Item	<XML Tag>	Mult.	Represent./ Type
4.1.2		AddressType	<AdrTp>	[0..1]	Code
4.1.3		Department	<Dept>	[0..1]	Text
4.1.4		SubDepartment	<SubDept>	[0..1]	Text
4.1.5		StreetName	<StrtNm>	[0..1]	Text
4.1.6		BuildingNumber	<BldgNb>	[0..1]	Text
4.1.7		PostCode	<PstCd>	[0..1]	Text
4.1.8		TownName	<TwnNm>	[0..1]	Text
4.1.9		CountrySubDivision	<CtrySubDvsn>	[0..1]	Text
4.1.10		Country	<Ctry>	[0..1]	Code
4.1.11		AddressLine	<AdrLine>	[0..7]	Text

4.1.2 AddressType <AdrTp>

Presence: [0..1]

Definition: Identifies the nature of the postal address.

Data Type: Code

*When this message item is present, one of the following **AddressType2Code** values must be used:*

Code	Name	Definition
ADDR	Postal	Address is the complete postal address.
BIZZ	Business	Address is the business address.
DLVY	DeliveryTo	Address is the address to which delivery is to take place.
HOME	Residential	Address is the home address.
MLTO	MailTo	Address is the address to which mail is sent.
PBOX	POBox	Address is a postal office (PO) box.

4.1.3 Department <Dept>

Presence: [0..1]

Definition: Identification of a division of a large organisation or building.

Data Type: Max70Text

Format: maxLength: 70
minLength: 1

4.1.4 SubDepartment <SubDept>

Presence: [0..1]

Definition: Identification of a sub-division of a large organisation or building.

Data Type: Max70Text

Format: maxLength: 70
minLength: 1

4.1.5 StreetName <StrtNm>

Presence: [0..1]

Definition: Name of a street or thoroughfare.

Data Type: Max70Text

Format: maxLength: 70
minLength: 1

4.1.6 BuildingNumber <BldgNb>

Presence: [0..1]

Definition: Number that identifies the position of a building on a street.

Data Type: Max16Text

Format: maxLength: 16
minLength: 1

4.1.7 PostCode <PstCd>

Presence: [0..1]

Definition: Identifier consisting of a group of letters and/or numbers that is added to a postal address to assist the sorting of mail.

Data Type: Max16Text

Format: maxLength: 16
minLength: 1

4.1.8 TownName <TwnNm>**Presence:** [0..1]**Definition:** Name of a built-up area, with defined boundaries, and a local government.**Data Type:** Max35Text**Format:** maxLength: 35

minLength: 1

4.1.9 CountrySubDivision <CtrySubDvsn>**Presence:** [0..1]**Definition:** Identifies a subdivision of a country such as state, region, county.**Data Type:** Max35Text**Format:** maxLength: 35

minLength: 1

4.1.10 Country <Ctry>**Presence:** [0..1]

*Impacted by **R1** in message definition **IdentificationModificationAdviceV02**, **R1** in message definition **IdentificationVerificationReportV02**, **R1** in message definition **IdentificationVerificationRequestV02**. Please refer to p.7, p.33, p.20 for additional information.*

Definition: Nation with its own government.**Data Type:** CountryCode**Format:** [A-Z]{2,2}**Rule(s):** Country

The code is checked against the list of country names obtained from the United Nations (ISO 3166, Alpha-2 code).

4.1.11 AddressLine <AdrLine>**Presence:** [0..7]**Definition:** Information that locates and identifies a specific address, as defined by postal services, presented in free format text.**Data Type:** Max70Text**Format:** maxLength: 70

minLength: 1

4.1.12 Identification <Id>**Presence:** [0..1]**Definition:** Unique and unambiguous identification of a party.**Type:** *This message item is composed of one of the following **Party11Choice** element(s):*

Ref	Or	Message Item	<XML Tag>	Mult.	Represent./ Type
4.1.13	{Or	OrganisationIdentification	<OrgId>	[1..1]	
4.1.21	Or}	PrivateIdentification	<PrvtId>	[1..1]	

4.1.13 OrganisationIdentification <OrgId>

Presence: [1..1]

This message item is part of choice 4.1.12 Identification.

Definition: Unique and unambiguous way to identify an organisation.

Type: This message item is composed of the following **OrganisationIdentification8** element(s):

Ref	Or	Message Item	<XML Tag>	Mult.	Represent./ Type
4.1.14		AnyBIC	<AnyBIC>	[0..1]	Identifier
4.1.15		Other	<Othr>	[0..*]	

4.1.14 AnyBIC <AnyBIC>

Presence: [0..1]

Impacted by R2 in message definition IdentificationModificationAdviceV02, R2 in message definition IdentificationVerificationReportV02, R2 in message definition IdentificationVerificationRequestV02. Please refer to p.7, p.33, p.20 for additional information.

Definition: Code allocated to a financial institution or non financial institution by the ISO 9362 Registration Authority as described in ISO 9362 "Banking - Banking telecommunication messages - Business identifier code (BIC)".

Data Type: AnyBICIdentifier

Format: [A-Z]{6,6}[A-Z2-9][A-NP-Z0-9]([A-Z0-9]{3,3}){0,1}

Rule(s): AnyBIC

Only a valid Business identifier code is allowed. Business identifier codes for financial or non-financial institutions are registered by the ISO 9362 Registration Authority in the BIC directory, and consists of eight (8) or eleven (11) contiguous characters comprising the first three or all four of the following components: INSTITUTION CODE, COUNTRY CODE, LOCATION CODE, BRANCH CODE. The institution code, country code and location code are mandatory, while the branch code is optional.

4.1.15 Other <Othr>

Presence: [0..*]

Definition: Unique identification of an organisation, as assigned by an institution, using an identification scheme.

Type: This message item is composed of the following **GenericOrganisationIdentification1** element(s):

Ref	Or	Message Item	<XML Tag>	Mult.	Represent./ Type
4.1.16		Identification	<Id>	[1..1]	Text
4.1.17		SchemeName	<SchmeNm>	[0..1]	
4.1.20		Issuer	<Issr>	[0..1]	Text

4.1.16 Identification <Id>

Presence: [1..1]

Definition: Identification assigned by an institution.

Data Type: Max35Text

Format: maxLength: 35
minLength: 1

4.1.17 SchemeName <SchmeNm>

Presence: [0..1]

Definition: Name of the identification scheme.

Type: *This message item is composed of one of the following **OrganisationIdentificationSchemeName1Choice** element(s):*

Ref	Or	Message Item	<XML Tag>	Mult.	Represent./ Type
4.1.18	{Or	Code	<Cd>	[1..1]	Code
4.1.19	Or}	Proprietary	<Prtry>	[1..1]	Text

4.1.18 Code <Cd>

Presence: [1..1]

This message item is part of choice 4.1.17 SchemeName.

Definition: Name of the identification scheme, in a coded form as published in an external list.

Data Type: ExternalOrganisationIdentification1Code

Format: maxLength: 4
minLength: 1

4.1.19 Proprietary <Prtry>

Presence: [1..1]

This message item is part of choice 4.1.17 SchemeName.

Definition: Name of the identification scheme, in a free text form.

Data Type: Max35Text

Format: maxLength: 35
minLength: 1

4.1.20 Issuer <Issr>

Presence: [0..1]

Definition: Entity that assigns the identification.

Data Type: Max35Text

Format: maxLength: 35
minLength: 1

4.1.21 PrivateIdentification <PrvtId>

Presence: [1..1]

This message item is part of choice 4.1.12 Identification.

Definition: Unique and unambiguous identification of a person, eg, passport.

Type: *This message item is composed of the following **PersonIdentification5** element(s):*

Ref	Or	Message Item	<XML Tag>	Mult.	Represent./ Type
4.1.22		DateAndPlaceOfBirth	<DtAndPlcOfBirth>	[0..1]	
4.1.27		Other	<Othr>	[0..*]	

4.1.22 DateAndPlaceOfBirth <DtAndPlcOfBirth>

Presence: [0..1]

Definition: Date and place of birth of a person.

Type: This message item is composed of the following *DateAndPlaceOfBirth* element(s):

Ref	Or	Message Item	<XML Tag>	Mult.	Represent./ Type
4.1.23		BirthDate	<BirthDt>	[1..1]	DateTime
4.1.24		ProvinceOfBirth	<PrvcOfBirth>	[0..1]	Text
4.1.25		CityOfBirth	<CityOfBirth>	[1..1]	Text
4.1.26		CountryOfBirth	<CtryOfBirth>	[1..1]	Code

4.1.23 BirthDate <BirthDt>

Presence: [1..1]

Definition: Date on which a person is born.

Data Type: ISODate

4.1.24 ProvinceOfBirth <PrvcOfBirth>

Presence: [0..1]

Definition: Province where a person was born.

Data Type: Max35Text

Format: maxLength: 35
minLength: 1

4.1.25 CityOfBirth <CityOfBirth>

Presence: [1..1]

Definition: City where a person was born.

Data Type: Max35Text

Format: maxLength: 35
minLength: 1

4.1.26 CountryOfBirth <CtryOfBirth>

Presence: [1..1]

*Impacted by **R1** in message definition **IdentificationModificationAdviceV02**, **R1** in message definition **IdentificationVerificationReportV02**, **R1** in message definition **IdentificationVerificationRequestV02**. Please refer to p.7, p.33, p.20 for additional information.*

Definition: Country where a person was born.

Data Type: CountryCode

Format: [A-Z]{2,2}

Rule(s): Country

The code is checked against the list of country names obtained from the United Nations (ISO 3166, Alpha-2 code).

4.1.27 Other <Othr>

Presence: [0..*]

Definition: Unique identification of a person, as assigned by an institution, using an identification scheme.

Type: This message item is composed of the following *GenericPersonIdentification1* element(s):

Ref	Or	Message Item	<XML Tag>	Mult.	Represent./ Type
4.1.28		Identification	<Id>	[1..1]	Text
4.1.29		SchemeName	<SchmeNm>	[0..1]	
4.1.32		Issuer	<Issr>	[0..1]	Text

4.1.28 Identification <Id>

Presence: [1..1]

Definition: Unique and unambiguous identification of a person.

Data Type: Max35Text

Format: maxLength: 35
minLength: 1

4.1.29 SchemeName <SchmeNm>

Presence: [0..1]

Definition: Name of the identification scheme.

Type: This message item is composed of one of the following *PersonIdentificationSchemeName1Choice* element(s):

Ref	Or	Message Item	<XML Tag>	Mult.	Represent./ Type
4.1.30	{Or	Code	<Cd>	[1..1]	Code
4.1.31	Or}	Proprietary	<Prtry>	[1..1]	Text

4.1.30 Code <Cd>

Presence: [1..1]

This message item is part of choice [4.1.29 SchemeName](#).

Definition: Name of the identification scheme, in a coded form as published in an external list.

Data Type: ExternalPersonIdentification1Code

Format: maxLength: 4
minLength: 1

4.1.31 Proprietary <Prtry>

Presence: [1..1]

*This message item is part of choice 4.1.29 **SchemeName**.*

Definition: Name of the identification scheme, in a free text form.

Data Type: Max35Text

Format: maxLength: 35
minLength: 1

4.1.32 Issuer <Issr>

Presence: [0..1]

Definition: Entity that assigns the identification.

Data Type: Max35Text

Format: maxLength: 35
minLength: 1

4.1.33 CountryOfResidence <CtryOfRes>

Presence: [0..1]

*Impacted by **R1** in message definition **IdentificationModificationAdviceV02**, **R1** in message definition **IdentificationVerificationReportV02**, **R1** in message definition **IdentificationVerificationRequestV02**. Please refer to p.7, p.33, p.20 for additional information.*

Definition: Country in which a person resides (the place of a person's home). In the case of a company, it is the country from which the affairs of that company are directed.

Data Type: CountryCode

Format: [A-Z]{2,2}

Rule(s): Country

The code is checked against the list of country names obtained from the United Nations (ISO 3166, Alpha-2 code).

4.1.34 ContactDetails <CtctDtls>

Presence: [0..1]

Definition: Set of elements used to indicate how to contact the party.

Type: *This message item is composed of the following **ContactDetails2** element(s):*

Ref	Or	Message Item	<XML Tag>	Mult.	Represent./ Type
4.1.35		NamePrefix	<NmPrfx>	[0..1]	Code
4.1.36		Name	<Nm>	[0..1]	Text
4.1.37		PhoneNumber	<PhneNb>	[0..1]	Text
4.1.38		MobileNumber	<MobNb>	[0..1]	Text
4.1.39		FaxNumber	<FaxNb>	[0..1]	Text
4.1.40		EmailAddress	<EmailAdr>	[0..1]	Text
4.1.41		Other	<Othr>	[0..1]	Text

4.1.35 NamePrefix <NmPrfx>

Presence: [0..1]

Definition: Specifies the terms used to formally address a person.

Data Type: Code

*When this message item is present, one of the following **NamePrefix1Code** values must be used:*

Code	Name	Definition
DOCT	Doctor	Title of the person is Doctor or Dr.
MADM	Madam	Title of the person is Madam.
MISS	Miss	Title of the person is Miss.
MIST	Mister	Title of the person is Mister or Mr.

4.1.36 Name <Nm>

Presence: [0..1]

Definition: Name by which a party is known and which is usually used to identify that party.

Data Type: Max140Text

Format: maxLength: 140
minLength: 1

4.1.37 PhoneNumber <PhneNb>

Presence: [0..1]

Definition: Collection of information that identifies a phone number, as defined by telecom services.

Data Type: PhoneNumber

Format: \+[0-9]{1,3}-[0-9()+\-]{1,30}

4.1.38 MobileNumber <MobNb>

Presence: [0..1]

Definition: Collection of information that identifies a mobile phone number, as defined by telecom services.

Data Type: PhoneNumber

Format: \+[0-9]{1,3}-[0-9()+\-]{1,30}

4.1.39 FaxNumber <FaxNb>

Presence: [0..1]

Definition: Collection of information that identifies a FAX number, as defined by telecom services.

Data Type: PhoneNumber

Format: \+[0-9]{1,3}-[0-9()+\-]{1,30}

4.1.40 EmailAddress <EmailAdr>

Presence: [0..1]

Definition: Address for electronic mail (e-mail).

Data Type: Max2048Text

Format: maxLength: 2048
minLength: 1

4.1.41 Other <Othr>

Presence: [0..1]

Definition: Contact details in an other form.

Data Type: Max35Text

Format: maxLength: 35
minLength: 1

Indexes

Index of Message Items

A

Account: <Acct>

Message Definition IdentificationModificationAdviceV02 6, 6

Message Definition IdentificationVerificationRequestV02 20

Message Definition IdentificationVerificationReportV02 32, 32

AdditionalInformation: <AddtlInf>

Message Definition IdentificationModificationAdviceV02 6

AddressLine: <AdrLine>

63, 64, 73, 74, 85

AddressType: <AdrTp>

63, 64, 73, 74, 85

Agent: <Agt>

Message Definition IdentificationModificationAdviceV02 6, 6, 6, 6

Message Definition IdentificationVerificationRequestV02 19, 19, 20, 20

Message Definition IdentificationVerificationReportV02 32, 32, 32, 32, 33

AnyBIC: <AnyBIC>

85

Assignee: <Assgne>

Message Definition IdentificationModificationAdviceV02 6

Message Definition IdentificationVerificationRequestV02 20

Message Definition IdentificationVerificationReportV02 32

Assigner: <Assgnr>

Message Definition IdentificationModificationAdviceV02 6

Message Definition IdentificationVerificationRequestV02 19

Message Definition IdentificationVerificationReportV02 32

Assignment: <Assgnmt>

Message Definition IdentificationModificationAdviceV02 5

Message Definition IdentificationVerificationRequestV02 19

Message Definition IdentificationVerificationReportV02 31

B

BICFI: <BICFI>

63, 73

BirthDate: <BirthDt>

85

BranchIdentification: <BrnchId>
64, 73

BuildingNumber: <BldgNb>
63, 64, 73, 74, 85

C

CityOfBirth: <CityOfBirth>
85

ClearingSystemIdentification: <ClrSysId>
63, 73

ClearingSystemMemberIdentification: <ClrSysMmbId>
63, 73

ClearingSystemReference: <ClrSysRef>
73

Code: <Cd>
61, 63, 63, 73, 73, 85, 85
Message Definition IdentificationVerificationReportV02 32

ContactDetails: <CtctDtls>
85

Contents: (User Defined)
Message Definition IdentificationModificationAdviceV02 7
Message Definition IdentificationVerificationRequestV02 20
Message Definition IdentificationVerificationReportV02 33

Country: <Ctry>
63, 64, 73, 74, 85

CountryOfBirth: <CtryOfBirth>
85

CountryOfResidence: <CtryOfRes>
85

CountrySubDivision: <CtrySubDvsn>
63, 64, 73, 74, 85

CreationDateTime: <CreDtTm>
73
Message Definition IdentificationModificationAdviceV02 6
Message Definition IdentificationVerificationRequestV02 19
Message Definition IdentificationVerificationReportV02 31, 32

Creator: <Cretr>
Message Definition IdentificationModificationAdviceV02 6

Message Definition IdentificationVerificationRequestV02 19

Message Definition IdentificationVerificationReportV02 31

D

DateAndPlaceOfBirth: <DtAndPlcOfBirth>

85

Department: <Dept>

63, 64, 73, 74, 85

E

EmailAddress: <EmailAdr>

86

EndToEndIdentification: <EndToEndId>

73

Envelope: <Envlp>

Message Definition IdentificationModificationAdviceV02 7

Message Definition IdentificationVerificationRequestV02 20

Message Definition IdentificationVerificationReportV02 33

F

FaxNumber: <FaxNb>

86

FinancialInstitutionIdentification: <FinInstnId>

63, 73

FirstAgent: <FrstAgt>

73

Message Definition IdentificationModificationAdviceV02 6

Message Definition IdentificationVerificationRequestV02 19

Message Definition IdentificationVerificationReportV02 32, 32

I

IBAN: <IBAN>

61

Identification: <Id>

61, 63, 64, 73, 73, 85, 85, 85

Message Definition IdentificationModificationAdviceV02 6

Message Definition IdentificationVerificationRequestV02 20

InstructionIdentification: <InstrId>

73

Issuer: <Issr>
61, 63, 73, 85, 85

M

MemberIdentification: <MmbId>
63, 73

MessageIdentification: <MsgId>
73
Message Definition IdentificationModificationAdviceV02 5
Message Definition IdentificationVerificationRequestV02 19
Message Definition IdentificationVerificationReportV02 31, 32

MessageNameIdentification: <MsgNmId>
73

MobileNumber: <MobNb>
86

Modification: <Mod>
Message Definition IdentificationModificationAdviceV02 6

N

Name: <Nm>
63, 64, 73, 74, 85, 86

NamePrefix: <NmPrfx>
86

O

OrganisationIdentification: <OrgId>
85

OriginalAssignment: <OrgnlAssgnmt>
Message Definition IdentificationVerificationReportV02 32

OriginalIdentification: <OrgnlId>
Message Definition IdentificationVerificationReportV02 32

OriginalPartyAndAccountIdentification: <OrgnlPtyAndAcctId>
Message Definition IdentificationModificationAdviceV02 6
Message Definition IdentificationVerificationReportV02 32

OriginalTransaction: <OrgnlTx>
73

OriginalTransactionReference: <OrgnlTxRef>
Message Definition IdentificationModificationAdviceV02 6

Other: <Othr>
61, 63, 73, 85, 85, 86

P

Party: <Pty>
Message Definition IdentificationModificationAdviceV02 6, 6, 6, 6, 6
Message Definition IdentificationVerificationRequestV02 19, 19, 20, 20
Message Definition IdentificationVerificationReportV02 31, 32, 32, 32, 32

PartyAndAccountIdentification: <PtyAndAcctId>
Message Definition IdentificationVerificationRequestV02 20

PhoneNumber: <PhneNb>
86

PlaceAndName: <PlcAndNm>
Message Definition IdentificationModificationAdviceV02 7
Message Definition IdentificationVerificationRequestV02 20
Message Definition IdentificationVerificationReportV02 33

PostalAddress: <PstlAdr>
63, 64, 73, 74, 85

PostCode: <PstCd>
63, 64, 73, 74, 85

PrivateIdentification: <PrvtId>
85

Proprietary: <Prtry>
61, 63, 63, 73, 73, 85, 85
Message Definition IdentificationVerificationReportV02 32

ProvinceOfBirth: <PrvcOfBirth>
85

R

Reason: <Rsn>
Message Definition IdentificationVerificationReportV02 32

Report: <Rpt>
Message Definition IdentificationVerificationReportV02 32

S

SchemeName: <SchmeNm>
61, 63, 73, 85, 85

StreetName: <StrtNm>

63, 64, 73, 74, 85

SubDepartment: <SubDept>

63, 64, 73, 74, 85

SupplementaryData: <SplmtryData>

Message Definition IdentificationModificationAdviceV02 7

Message Definition IdentificationVerificationRequestV02 20

Message Definition IdentificationVerificationReportV02 33

T

TownName: <TwnNm>

63, 64, 73, 74, 85

TransactionIdentification: <TxId>

73

U

UpdatedPartyAndAccountIdentification: <UpdtdPtyAndAcctId>

Message Definition IdentificationModificationAdviceV02 6

Message Definition IdentificationVerificationReportV02 32

V

Verification: <Vrfctn>

Message Definition IdentificationVerificationRequestV02 20

Message Definition IdentificationVerificationReportV02 32

Index of XML tags

A

<Acct>: Account

Message Definition IdentificationModificationAdviceV02 6, 6

Message Definition IdentificationVerificationRequestV02 20

Message Definition IdentificationVerificationReportV02 32, 32

<AddtlInf>: AdditionalInformation

Message Definition IdentificationModificationAdviceV02 6

<AdrLine>: AddressLine

63, 64, 73, 74, 85

<AdrTp>: AddressType

63, 64, 73, 74, 85

<Agt>: Agent

Message Definition IdentificationModificationAdviceV02 6, 6, 6, 6, 6

Message Definition IdentificationVerificationRequestV02 19, 19, 20, 20
Message Definition IdentificationVerificationReportV02 32, 32, 32, 32, 33

<AnyBIC>: AnyBIC
85

<Assgne>: Assignee
Message Definition IdentificationModificationAdviceV02 6
Message Definition IdentificationVerificationRequestV02 20
Message Definition IdentificationVerificationReportV02 32

<Assgnmt>: Assignment
Message Definition IdentificationModificationAdviceV02 5
Message Definition IdentificationVerificationRequestV02 19
Message Definition IdentificationVerificationReportV02 31

<Assgnr>: Assigner
Message Definition IdentificationModificationAdviceV02 6
Message Definition IdentificationVerificationRequestV02 19
Message Definition IdentificationVerificationReportV02 32

B

<BICFI>: BICFI
63, 73

<BirthDt>: BirthDate
85

<BldgNb>: BuildingNumber
63, 64, 73, 74, 85

<BrnchId>: BranchIdentification
64, 73

C

<Cd>: Code
61, 63, 63, 73, 73, 85, 85
Message Definition IdentificationVerificationReportV02 32

<CityOfBirth>: CityOfBirth
85

<ClrSysId>: ClearingSystemIdentification
63, 73

<ClrSysMmbId>: ClearingSystemMemberIdentification
63, 73

<ClrSysRef>: ClearingSystemReference

73

<CreDtTm>: CreationDateTime

73

Message Definition IdentificationModificationAdviceV02 6

Message Definition IdentificationVerificationRequestV02 19

Message Definition IdentificationVerificationReportV02 31, 32

<Cretr>: Creator

Message Definition IdentificationModificationAdviceV02 6

Message Definition IdentificationVerificationRequestV02 19

Message Definition IdentificationVerificationReportV02 31

<CtctDtls>: ContactDetails

85

<Ctry>: Country

63, 64, 73, 74, 85

<CtryOfBirth>: CountryOfBirth

85

<CtryOfRes>: CountryOfResidence

85

<CtrySubDvsn>: CountrySubDivision

63, 64, 73, 74, 85

D

<Dept>: Department

63, 64, 73, 74, 85

<DtAndPlcOfBirth>: DateAndPlaceOfBirth

85

E

<EmailAdr>: EmailAddress

86

<EndToEndId>: EndToEndIdentification

73

<Envlp>: Envelope

Message Definition IdentificationModificationAdviceV02 7

Message Definition IdentificationVerificationRequestV02 20

Message Definition IdentificationVerificationReportV02 33

F

<FaxNb>: FaxNumber
86

<FinInstnId>: FinancialInstitutionIdentification
63, 73

<FrstAgt>: FirstAgent
73
Message Definition IdentificationModificationAdviceV02 6
Message Definition IdentificationVerificationRequestV02 19
Message Definition IdentificationVerificationReportV02 32, 32

I

<IBAN>: IBAN
61

<Id>: Identification
61, 63, 64, 73, 73, 85, 85, 85
Message Definition IdentificationModificationAdviceV02 6
Message Definition IdentificationVerificationRequestV02 20

<InstrId>: InstructionIdentification
73

<Issr>: Issuer
61, 63, 73, 85, 85

M

<MmbId>: MemberIdentification
63, 73

<MobNb>: MobileNumber
86

<Mod>: Modification
Message Definition IdentificationModificationAdviceV02 6

<MsgId>: MessageIdentification
73
Message Definition IdentificationModificationAdviceV02 5
Message Definition IdentificationVerificationRequestV02 19
Message Definition IdentificationVerificationReportV02 31, 32

<MsgNmId>: MessageNameIdentification
73

N

<Nm>: Name
63, 64, 73, 74, 85, 86

<NmPrfx>: NamePrefix
86

O

<OrgId>: OrganisationIdentification
85

<OrgnlAssgnmt>: OriginalAssignment
Message Definition IdentificationVerificationReportV02 32

<OrgnlId>: OriginalIdentification
Message Definition IdentificationVerificationReportV02 32

<OrgnlPtyAndAcctId>: OriginalPartyAndAccountIdentification
Message Definition IdentificationModificationAdviceV02 6
Message Definition IdentificationVerificationReportV02 32

<OrgnlTx>: OriginalTransaction
73

<OrgnlTxRef>: OriginalTransactionReference
Message Definition IdentificationModificationAdviceV02 6

<Othr>: Other
61, 63, 73, 85, 85, 86

P

<PhneNb>: PhoneNumber
86

<PlcAndNm>: PlaceAndName
Message Definition IdentificationModificationAdviceV02 7
Message Definition IdentificationVerificationRequestV02 20
Message Definition IdentificationVerificationReportV02 33

<Prtry>: Proprietary
61, 63, 63, 73, 73, 85, 85
Message Definition IdentificationVerificationReportV02 32

<PrvcOfBirth>: ProvinceOfBirth
85

<PrvtId>: PrivateIdentification
85

<PstCd>: PostCode
63, 64, 73, 74, 85

<PstlAdr>: PostalAddress
63, 64, 73, 74, 85

<Pty>: Party
Message Definition IdentificationModificationAdviceV02 6, 6, 6, 6
Message Definition IdentificationVerificationRequestV02 19, 19, 20, 20
Message Definition IdentificationVerificationReportV02 31, 32, 32, 32, 32

<PtyAndAcctId>: PartyAndAccountIdentification
Message Definition IdentificationVerificationRequestV02 20

R

<Rpt>: Report
Message Definition IdentificationVerificationReportV02 32

<Rsn>: Reason
Message Definition IdentificationVerificationReportV02 32

S

<SchmeNm>: SchemeName
61, 63, 73, 85, 85

<SplmtryData>: SupplementaryData
Message Definition IdentificationModificationAdviceV02 7
Message Definition IdentificationVerificationRequestV02 20
Message Definition IdentificationVerificationReportV02 33

<StrtNm>: StreetName
63, 64, 73, 74, 85

<SubDept>: SubDepartment
63, 64, 73, 74, 85

T

<TwnNm>: TownName
63, 64, 73, 74, 85

<TxId>: TransactionIdentification
73

U

<UpdtdPtyAndAcctId>: UpdatedPartyAndAccountIdentification
Message Definition IdentificationModificationAdviceV02 6

Message Definition IdentificationVerificationReportV02 32

V

<Vrftn>: Verification

Message Definition IdentificationVerificationRequestV02 20

Message Definition IdentificationVerificationReportV02 32

Index of Message Item Types

A

AccountIdentification4Choice

61

Message Definition IdentificationModificationAdviceV02 6, 6

Message Definition IdentificationVerificationRequestV02 20

Message Definition IdentificationVerificationReportV02 32, 32

AccountSchemeName1Choice

61

AddressType2Code

63, 64, 73, 74, 85

AnyBICIdentifier

49, 85

AustrianBankleitzahlIdentifier

50

B

BBANIdentifier

50

BelgianIdentifier

51

BICFIIdentifier

50, 63, 73

BICNonFIIdentifier

50

BloombergIdentifier

51

BranchAndFinancialInstitutionIdentification5

63, 73

Message Definition IdentificationModificationAdviceV02 6, 6, 6, 6, 6, 6

Message Definition IdentificationVerificationRequestV02 19, 19, 19, 20, 20

Message Definition IdentificationVerificationReportV02 32, 32, 32, 32, 32, 32, 33

BranchData2

64, 73

C

CanadianPaymentsARNIdentifier

51

CHIPSParticipantIdentifier

51

CHIPSUniversalIdentifier

51

ClearingSystemIdentification2Choice

63, 73

ClearingSystemMemberIdentification2

63, 73

ConsolidatedTapeAssociationIdentifier

52

ContactDetails2

85

CountryCode

52, 63, 64, 73, 74, 85, 85, 85

CurrencyAndAmount

48

CurrencyCode

52

CUSIPIdentifier

51

D

DateAndPlaceOfBirth

85

DunsIdentifier

52

DutchIdentifier

52

E

EANGLNIdentifier	52
EuroclearClearstreamIdentifier	53
ExternalAccountIdentification1Code	53, 61
ExternalClearingSystemIdentification1Code	53, 63, 73
ExternalFinancialInstitutionIdentification1Code	53, 63, 73
ExternalOrganisationIdentification1Code	53, 85
ExternalPersonIdentification1Code	54, 85
ExternalVerificationReason1Code	58
Message Definition IdentificationVerificationReportV02	32

F

FedwireRoutingNumberIdentifier	54
FinancialIdentificationSchemeName1Choice	63, 73
FinancialInstitutionIdentification8	63, 73

G

GenericAccountIdentification1	61
GenericFinancialIdentification1	63, 73
GenericOrganisationIdentification1	85
GenericPersonIdentification1	85

GermanBankleitzahlIdentifier
54

H

HellenicBankIdentificationCodeIdentifier
54

HongKongBankIdentifier
54

I

IBAN2007Identifier
54, 61

IdentificationAssignment2
Message Definition IdentificationModificationAdviceV02 5
Message Definition IdentificationVerificationRequestV02 19
Message Definition IdentificationVerificationReportV02 31

IdentificationInformation2
Message Definition IdentificationModificationAdviceV02 6, 6
Message Definition IdentificationVerificationRequestV02 20
Message Definition IdentificationVerificationReportV02 32, 32

IdentificationModification2
Message Definition IdentificationModificationAdviceV02 6

IdentificationVerification2
Message Definition IdentificationVerificationRequestV02 20

IdentificationVerificationIndicator
Message Definition IdentificationVerificationReportV02 32

ImpliedCurrencyAndAmount
49

IndianFinancialSystemCodeIdentifier
55

IrishNSCIdentifier
55

ISINIdentifier
55

ISODate
49, 85

ISODateTime

49, 73

Message Definition IdentificationModificationAdviceV02 6

Message Definition IdentificationVerificationRequestV02 19

Message Definition IdentificationVerificationReportV02 31, 32

ItalianDomesticIdentifier

55

L

LanguageCode

55

M

Max140Text

58, 63, 64, 73, 74, 85, 86

Message Definition IdentificationModificationAdviceV02 6

Max15NumericText

59

Max16Text

59, 63, 63, 64, 64, 73, 73, 74, 74, 85, 85

Max2048Text

59, 86

Max256Text

59

Max34Text

59, 61

Max350Text

59

Message Definition IdentificationModificationAdviceV02 7

Message Definition IdentificationVerificationRequestV02 20

Message Definition IdentificationVerificationReportV02 33

Max35Text

60, 61, 61, 63, 63, 63, 63, 63, 63, 63, 64, 64, 64, 73, 73, 73, 73, 73, 73, 73, 73, 73, 73, 73, 73, 73, 73, 74, 74, 85, 85, 85, 85, 85, 85, 85, 85, 86

Message Definition IdentificationModificationAdviceV02 5, 6

Message Definition IdentificationVerificationRequestV02 19, 20

Message Definition IdentificationVerificationReportV02 31, 32, 32, 32

Max70Text

60, 63, 63, 63, 63, 64, 64, 64, 64, 73, 73, 73, 73, 74, 74, 74, 74, 85, 85, 85, 85

MessageIdentification5
 Message Definition IdentificationVerificationReportV02 32

MICIdentifier
 55

N

NamePrefix1Code
 86

NewZealandNCCIdentifier
 56

O

OrganisationIdentification8
 85

OrganisationIdentificationSchemeName1Choice
 85

OriginalTransactionReference18
 72
 Message Definition IdentificationModificationAdviceV02 6

P

Party11Choice
 85

Party12Choice
 Message Definition IdentificationModificationAdviceV02 6, 6, 6
 Message Definition IdentificationVerificationRequestV02 19, 19, 20
 Message Definition IdentificationVerificationReportV02 31, 32, 32

PartyIdentification43
 84
 Message Definition IdentificationModificationAdviceV02 6, 6, 6, 6
 Message Definition IdentificationVerificationRequestV02 19, 19, 20, 20
 Message Definition IdentificationVerificationReportV02 31, 32, 32, 32, 32

PaymentIdentification4
 73

PersonIdentification5
 85

PersonIdentificationSchemeName1Choice
 85

PhoneNumber
60, 86, 86, 86

PolishNationalClearingCodeIdentifier
56

PortugueseNCCIdentifier
56

PostalAddress6
63, 64, 73, 74, 85

Q

QUICKIdentifier
56

R

RICIdentifier
56

RussianCentralBankIdentificationCodeIdentifier
56

S

SEDOLIdentifier
57

SicovamIdentifier
57

SouthAfricanNCCIdentifier
57

SpanishDomesticInterbankingIdentifier
57

SupplementaryData1
Message Definition IdentificationModificationAdviceV02 7
Message Definition IdentificationVerificationRequestV02 20
Message Definition IdentificationVerificationReportV02 33

SupplementaryDataEnvelope1
Message Definition IdentificationModificationAdviceV02 7
Message Definition IdentificationVerificationRequestV02 20
Message Definition IdentificationVerificationReportV02 33

SwissBCIdentifier
57

SwissSICIdentifier
57

T

TickerIdentifier
57

U

UKDomesticSortCodeIdentifier
58

UPICIdentifier
58

V

ValorenIdentifier
58

VerificationReason1Choice
Message Definition IdentificationVerificationReportV02 32

VerificationReport2
Message Definition IdentificationVerificationReportV02 32

W

WertpapierIdentifier
58

Revision Record

Revision	Date	Author	Description	Sections affected
1.0	11/06/2012	ISO 20022 RA	Initial version	All

Disclaimer:

Although the Registration Authority has used all reasonable efforts to ensure accuracy of the contents of the iso20022.org website and the information published thereon, the Registration Authority assumes no liability whatsoever for any inadvertent errors or omissions that may appear thereon. Moreover, the information is provided on an "as is" basis. The Registration Authority disclaims all warranties and conditions, either express or implied, including but not limited to implied warranties of merchantability, title, non-infringement and fitness for a particular purpose. The Registration Authority shall not be liable for any direct, indirect, special or consequential damages arising out of the use of the information published on the iso20022.org website, even if the Registration Authority has been advised of the possibility of such damages.

Intellectual Property Rights:

The ISO 20022 Message Definitions described in this document were contributed by the French SWIFT User Group. The ISO 20022 IPR policy is available at www.ISO20022.org > About ISO 20022 > Intellectual Property Rights.